



NEWCASTLE CRUISING YACHT CLUB

Sailing Season Handbook 2019-2020
-Sailing Instructions-

Emergency Contact Points	Radio	Phone
Race Frequency	VHF Ch 16 VHF Ch 77	
Rescue Co-Ordination Centre Australia	On EPIRB Activation	1800 641 792
Newcastle Shipping Movements www.newportcorp.com.au	VHF Ch 9	4908 8200
Bureau of Meteorology Marine Warning		1300 659 218
Newcastle Water Police	VHF Ch 16	4902 8230
NSW Marine Rescue Newcastle (0600—1900 hrs. daily)	VHF Ch 16 HF Ch 2182	4927 8237
NSW Marine Rescue Lake Macquarie	VHF Ch 16 HF Ch 2182	4971 3498
NSW Marine Rescue Port Stephens	VHF Ch 16 HF Ch 2182	4981 3585
NSW Marine Rescue The Entrance (0800 - 1700 hrs. weekends)	VHF Ch 16	4332 3055

BURGEE AND OFFICERS PENNANTS



COMMODORE



VICE
COMMODORE



REAR
COMMODORE



CLUB CAPTAIN



RETIRED
COMMODORE



CLUB BURGEE



SAILING @ NCYC

LASERS

Laser sailing is held on Friday evenings at NCYC during the spring and summer months and Saturday afternoons in winter. The short race format allows up to 3 races per race day and caters for sailors of all abilities. Many of our Laser sailors also compete in interclub events.

INSHORE KEELBOAT

The Club's recently acquired fleet of Elliott 6m Olympic yachts will bring new life to One-Design racing in the Hunter. The fleet of eight sport yachts will offer opportunities to compete in regular pointscore racing as well as opportunities to contest mini-regattas and match racing events.

OFFSHORE KEELBOAT

Offshore keelboat racing is considered by many to be the pinnacle of our sailing programme. We run 'Short Ocean Pointscore series' on Sundays over Spring, Summer and Winter and a blue water Ocean Pointscore for longer distance races.

Wednesday afternoons are a blast during daylight saving months at NCYC. Come and join us on the water after work for an enjoyable evening sail with friends and family. With a simple Stockton Bight race course (out to the Sygna buoy and back), take a moment to take in the backdrop of Nobby's, Newcastle and the Ocean. We frequently see whales, dolphins and sealions.

CRUISING

With numerous short weekend trips planned throughout the warmer months, we encourage you to take your boat, or jump on with someone else, and meet new friends through cruising with experienced club members mentoring you along the way. We have a passionate group of cruisers who can be available to help you 'sail away' whether you have a boat or are looking to buy one!

OPTI GREEN FLEET

Introducing—the next step from our TACKERS learn to sail program, Green Fleet (Learn to Race). This new initiative is targeted at young sailors who have graduated from our Tackers program and are now seeking a fun and adventurous opportunity with other likeminded young sailors as they begin racing our fleet of Tackers Optis.

CONTACT US

For any enquiries regarding sailing at NCYC please contact the Sailing Office (02) 4940 8188 or sailing@ncyc.net.au



CREWING @ NCYC



Are you looking for additional crew?

Check out the Sail Connect webpage for access to an extensive database of sailors in the local area who are keen to join your Team. The Sail Connect database allows you to contact potential crew directly.
<https://sailconnect.com/>

How do I start sailing?

Whether you are new to sailing or an experienced sailor, NCYC may be able to assist you to find your next crewing opportunity. Visit the Sail Connect webpage (<https://sailconnect.com/>) or contact NCYC's Sailing Office at sailing@ncyc.net.au to arrange your sailing adventure!

Alternatively, come to the Club on race days (Wednesdays and Sundays) approximately 2 hours before the start and approach skippers in the Club or ask at the bar who has crewing positions open. History suggests that you will generally get a ride!

Crewing in longer offshore races

For more experienced sailors the opportunity exists to compete in NCYC's Ocean Pointscore races or crew on an NCYC yacht that competes in other long distance offshore races such as the Pittwater to Coffs Harbour Race or the Sydney Hobart Yacht Race.

The best way to explore these sailing opportunities is to ask around at the Club and talk to skippers that regularly compete in these races about crewing opportunities on their yachts. Obtaining your Sea Safety Survival Course (SSSC), Provide First Aid Course and/or Radio Operators Certificate may assist you in securing a crew role in these longer offshore races.



For more information please Contact:

NCYC Sailing Office
sailing@ncyc.net.au Phone: 02 4940 8188



INDEX

Emergency Contact Points, Burgee and Officers' Pennants	2
Sailing and Crewing at NCYC	3 - 4
Index	5
NCYC Race Officials	6
Glossary of Abbreviations	7
Harbour Warning	8
Risk Warning	9
NSW Maritime Authority Requirement in Case of Accident	10
Australian Sailing Special Regulations Audit	12
Sailing Instructions - Keelboat	15 - 21
Sailing Instructions - Laser Fleet	22 - 25
Yacht Register	28 - 30
Supplementary Register	31
Perpetual Trophies	32 - 33
Calendar	34
Mark Descriptions	42
Short Ocean Pointscore and Series Courses	43 - 46
Race Start Procedures	48
Cruising Fleet Calendar	49
NCYC Course Map	51
International Code Flags	53

NCYC SAILING PROGRAM

COMMODORE

Steve Rae

VICE COMMODORE

Valda Johnston

REAR COMMODORE

Barry Kelly

CLUB CAPTAIN

Adrian Kiely

CEO

Paul O'Rourke

SAILING COMMITTEE

Phil Ashley-Brown, Sarah Gamble, Rob Howard,
Valda Johnston, Barry Kelly, Mark Richards & Mark Webb

NATIONAL & INTERNATIONAL RACE OFFICERS

Ted Anderson, Damien Boldyrew, Ian Humphries,
Robyn Tames and Phil Yeomans

RACE OFFICERS

Kevin Abrahamson, Sue Anderson, Andrew Buchan, Jack Buchan,
Alyson Gearing, Mary Holley, Jan Howard, Rod Johnson, Nina Long, Peter Lovell,
Doug Peters and Ken Semple

CLUB HANDICAPPER

Mark Richards

EQUIPMENT AUDITORS

Richard Arnall, Jack Buchan, Richard Fleck, John Hardy, Simon Macks,
Doug Peters, Neil Pilz, Mark Richards, Mike Smith, and Ernie Thirkell

Please contact the sailing office for equipment audit bookings.

Newcastle Cruising Yacht Club

95 Hannell Street, Wickham NSW 2293

Phone: 02 4940 8188

Web: www.ncyc.net.au Email: sailing@ncyc.net.au

GLOSSARY OF ABBREVIATIONS

AS	Australian Sailing
AS SR	Australian Sailing Special Regulation
BOM	Bureau of Meteorology
CV	Committee Vessel
DNC	Did Not Come to the Starting Area
DNF	Did Not Finish
DNS	Did Not Start
DSQ	Disqualified
EPIRB	Emergency Position Indicating Radio Beacon
IDM	Isolated Danger Mark
IRC	International measurement and handicapping methodology managed by RORC.
MOB	Man Overboard
NCYC	Newcastle Cruising Yacht Club
NOR	Notice of Race
OCS	On the course side of the starting line at her starting signal and failed to start or broke RRS 30.1.
PC	Protest Committee
PFD	Personal Flotation Device
PHS	Performance Handicap System
RC	Race Committee
RMI	Righting Moment Index
RMS	Roads & Maritime Service
RRS	Racing Rules of Sailing
SI(s)	Sailing Instructions
TCF	Time Correction Factor
TES	TopYacht Entry System
TLE	Time Limit Expired
WS	World Sailing

HARBOUR WARNING

It is absolutely essential that Yachts do not interfere with the safe passage of commercial shipping on, or near, Newcastle Harbour.

- The Port of Newcastle operates 365 days by 24 hours. On average there are at least 10 major shipping movements per day. It is a busy port.
- The navigation channel is only 185m wide at the heads. Ships (excluding tug boats) are up to 50m wide.
- Ships start their entrance to Newcastle approximately 4km off the breakwaters. Within this limit they cannot turn or stop their approach.
- Ships generally enter the harbour at about 8-10 knots in order to maintain steerage. They cannot and will not slow down to avoid yachts. Many ships have a "blind spot" of up to 500m ahead.
- The skipper of any vessel must ensure that it is not navigated within 200m of the bow of a commercial vessel or ship that is underway.
- All boats racing at NCYC will have engines running and in neutral when within the harbor and when within 500m to seaward of the entrance during departure and arrival. A boat that cannot manoeuvre safely and is in danger of hindering any commercial shall only use her engine for propulsion to clear such shipping. The use of the engine for propulsion must be logged.
- Competitors are reminded that a restricted navigation zone exists on approach to, and within, Newcastle Harbour (refer Chart AUS207).

YOUR COOPERATION IN THIS MATTER IS ESSENTIAL
IF WE ARE TO CONTINUE SAILING IN THE HARBOUR.

IMPORTANT NOTICE

All skippers at NCYC must be familiar with:

- International Regulations for the Prevention of Collision at Sea.
- Maritime Services Act.
- Newcastle Harbour Safety Information prepared by Newcastle Port Corp, RMS and NCYC.
- Port of Newcastle Incident Control Plan.
- Any other Regulation that applies to boating on Newcastle Harbour.

RISK WARNING

This **RISK WARNING** is issued jointly by the Newcastle Cruising Yacht Club (herein known as NCYC) and NSW Roads and Maritime Service (RMS), pursuant to the **Civil Liability Act 2002** to all persons wishing to participate in the sailing activities conducted by NCYC.

Participants are warned that regardless of the precautions, which might be taken by reasonable and experienced persons, sailing can be a dangerous pursuit and participants may be exposed to significant risk of property damage, physical harm and possibly death.

As an indication, these risks may include, but are not limited to:

The extremes of weather and sea conditions.

The sudden movement of the vessel at any time and the possibility that participants may fall or be thrown overboard, resulting in drowning.

The possibility that participants may be injured by equipment on the vessel.

The absence of immediate medical care and the likelihood that significant delays may occur before medical care is available.

Exposure to the elements for extended periods.

Refer to NCYC Sailing Handbook inside cover, "NCYC Emergency Contact Points" and SI 1.3 and 1.4.

NCYC and RMS also warns participants, that regardless of their best intentions, they may be unable to render assistance to participants who are in distress. Participants are warned to consider the above risk and other risks before deciding to participate in any sailing event with NCYC. RRS Rule 4 Decision to Race. The responsibility for a boat's decision to participate in a race or to continue racing is hers alone.

Participants are also advised that although NCYC is covered by third party public liability insurance, this cover DOES NOT extend to participants. Any participant who considers that they have a need for insurance must make their own private arrangements with an insurer. Some personal accident insurance is available to all crew and full members of NCYC and other participants who have sailed at NCYC less than 3 times in the current sailing season or who are competing in a distinct regatta representing another AS affiliated club of which they are a member. It shall be the responsibility of the person in charge of any boat to ensure that all crew members on board for each race comply with this prescription.

This cover is provided through Australian Sailing Ltd. Please refer to their website for further details regarding this cover.

NSW MARITIME AUTHORITY REQUIREMENT IN CASE OF AN ACCIDENT

SECTION 30G MARITIME SERVICES ACT No 47 1935
No 19 and No 3 (I) AM 1981 No 76 Sch 3(4)

- (1) In this section the word "vessel" means a vessel of less than 30 metres in length overall.
- (2) Where, owing to the presence of a vessel in any port or navigable waters, an accident occurs, the master of the vessel concerned in the accident:
 - (a) shall stop the master's vessel,
 - (b) if the accident results in the death of or injury to any person, or in damage to a vessel which affects the seaworthiness of the vessel or the safety of persons on board the vessel, shall give any assistance which may be necessary and which it is in the master's power to give,
 - (c) if required to do so by any person having reasonable grounds for so requiring, shall produce any license to navigate a vessel at speed, license as coxswain or master's certificate, which the master holds, and shall give particulars of the master's name and place of abode, the name and addresses of the owner of the vessel. The name of the vessel and any distinguishing number which is, or is required to be, displayed by the vessel in pursuance of or by any Act or regulation,
 - (d) if required to do so by any officer of the Board or any member of the police force, shall give such particulars as it is in the master's power to give as to the time, place and nature of the accident, the name of every vessel concerned in the accident and any distinguishing number which was carried by any such vessel, the name and address of every person who was concerned in or who witnessed the accident, and the extent of any injury or damage resulting from the accident, and
 - (e) if such accident has resulted in the death of or injury to any person, or in damage to a vessel or to any other property to an extent apparently exceeding one hundred dollars, shall, as soon as practicable and in any case within twenty four hours after the accident, forward to the Board in writing the particulars that, under paragraph (d), the master may be required to give, unless such particulars have already been given by the master to a member of the police force, or to an officer of the Board, who required the master to give such particulars.
- (3) Any person who:
 - (a) without reasonable excuse, fails to comply with any provision of subsection (2), or
 - (b) willfully furnishes any false or misleading particulars in respect of any matter pursuant to paragraph (c), (d) or (e) or subsection (2), shall be guilty of an offence against this act and liable to a penalty not exceeding four penalty units.



NCYC SAILING ACADEMY



The NCYC Sailing Academy offers sailing courses in both our fleet of Force 24 inshore keelboats and our new fleet of OziOpti dinghies.

Courses are available for all ages, kids to adults, from absolute beginners up to the more experienced.

Come along to one of our Discover Sailing Experiences to get a taste of the wonderful fun and opportunities sailing at the NCYC presents.

A sailing course makes a great present - gift vouchers are available.

Loads of details are available on the website or contact the Sailing Office for more information.

Tel: 4940 8188 E: sailingacademy@ncyc.net.au

www.ncyc.net.au

AUSTRALIAN SAILING SPECIAL REGULATIONS AUDIT

PRESENTATION OF A BOAT FOR AN EQUIPMENT AUDIT

Boat owners should be aware of the Club's policy in relation to equipment audits and the following broad guidelines.

- Boat owners should obtain a current Australian Sailing (AS) Special Regulations Equipment Audit Form from the NCYC website or the AS website.
- The owner or representative should carry out the initial inspection and sign the appropriate box.
- Boat owners should make a firm appointment for an audit and they should be punctual.
- Necessary equipment should be laid out for inspection.
- The skipper and a knowledgeable crew member should be on board during the audit.

EQUIPMENT LAYOUT FOR AUDIT

All items required for Audit should be laid out starting port side aft commencing with the lowest rule number, and

- storm boards should be ready to be put in place
- sea cocks and plugs should be exposed, not hidden by equipment
- know the water and fuel capacity of the boats tanks
- have fire extinguishers taken from brackets so date tags can be sighted
- have First Aid kits open and items with use by dates on the top so that expiry dates can be checked
- have publications and charts on the chart table
- have emergency navigation lights, with batteries fitted, available
- have storm sails on deck, ready to hoist, with sheets attached
- have the radio tuned and ready to be tested
- have PFDs, harnesses, tethers and flares laid out.

AFTER SAFETY INSPECTION

It is the owner's responsibility to ensure that the boat continues to comply in every respect with the category the boat is competing in.

Owners should remain familiar with the current AS Special Regulations and ensure that all equipment remains on the boat, is kept in good order and that equipment is replaced or repaired as necessary.

The onus is NOT on the race organisers, the club or the equipment auditors to perform ongoing checks or to confirm compliance. The responsibility remains with the boat owner- the audit only verifies that the equipment is on board at the time of the audit.

Newcastle Cruising Yacht Club Annual Audit Day



Saturday 1st August 2020

Bookings or Enquiries

T: (02) 4940 8188 E: sailing@ncyc.net.au

Saturday 1st August 2020

Bookings or Enquiries

T: (02) 4940 8188 E: sailing@ncyc.net.au

Saturday 1st August 2020

Bookings or Enquiries

T: (02) 4940 8188 E: sailing@ncyc.net.au

NCYC KEELBOAT SAILING INSTRUCTIONS

BASIC PRINCIPLE SPORTSMANSHIP AND THE RULES

NCYC is affiliated with AS and conducts all sailing in line with the World Sailing Racing Rules of Sailing and AS Special Regulations and recommendations.

Competitors in the sport of sailing are governed by a body of rules that they are expected to follow and enforce. A fundamental principle of sportsmanship is that when competitors break a rule they will promptly take a penalty, which may be to retire (RRS 44).

1.0 RULES

1.1 To minimise the risks of accident sailors at NCYC must be familiar with and obey the rules as laid out in these sailing instructions (SIs) and:

- Current Racing Rules of Sailing (RRS).
- AS Special Regulations.
- Current IRC Rules Parts A, B and C shall apply.
- Any additional SIs.

1.2 NCYC offshore racing is Category 4 as defined by AS Special Regulations Part 1 unless otherwise stated.

- Owners may opt to race under Category 7 PLUS offshore, but in this case a wind limit of 21 knots and sea state of less than 4 metres may be imposed. The extra equipment required for Category 7 PLUS is shown on the NCYC audit form of that name (see NCYC website - www.ncyc.net.au/sailing/sailing-forms)
- All boats must have a current, valid AS Special Regulations Compliance Form and carry the equipment identified on that Form at all times.
- Racing Inshore in Newcastle Harbour is Category 7 as defined by AS Special Regulations Part 1 unless otherwise stated.

1.3 BEFORE RACING

- Racing Rules of Sailing Part 1, Fundamental Rules apply to all skippers and crew racing at NCYC. All skippers and crew must read and understand Rules 1– 7 prior to racing.
- It is the skipper's responsibility to ensure the crew knows where Life Saving Equipment is stowed on the boat and how to use it.
- Attention is drawn to AS Special Regulations 6.01.2, Advisory Appendix D and the need to practice man overboard procedures with your crew regularly.
- NCYC strongly recommends that all yachts should schedule a MOB drill prior to racing and again at regular intervals during the season.
- Skippers shall ensure all crew members know how to locate and wear a PFD as per the requirements of RMS and RRS.

1.4 EMERGENCIES - Attention is drawn to RRS 1.1. "A boat or competitor shall give all possible help to any person or vessel in danger".
CREW OVERBOARD – The Race Officer (RO) must be notified immediately of a Crew Overboard Incident. After 15 minutes an emergency response may be initiated by the RO including a Search and Rescue response unless already activated by the vessel affected.

DISTRESS OR ACCIDENT – Skippers and crews shall comply with their responsibilities to render assistance and notify authorities (Maritime Services Act).

2.0 SAFETY EQUIPMENT AND AUDITS

- 2.1 AS Special Regulations (AS SR) shall apply to all entrants in the NCYC races. Refer to section "AS Special Regulations Audit" within this handbook.
- 2.2 Attention is drawn to AS SR Part 1 Section 1, 1.02 (Responsibility of the person in charge).
- 2.3 NCYC reserves the right to perform random safety audit inspections on any yacht entered into a NCYC race and DSQ may apply for non-compliance with AS SR. This amends RRS A5.
- 2.4 AS Special Regulations Part 1 Section 4, 4.03.1 requires CAT 1, 2 and 3 boats have Jackstays attached to the deck. AS Special Regulations Part 1 Section 4, 4.03.2 requires that CAT 4 boats have clipping points. NCYC recommends that CAT 4 boats attach Jackstays to their decks as per AS Special Regulations Part 1 Section 4, 4.03.1.

3.0 ENTRIES

- 3.1 To enter a race a boat shall complete the Race Entry issued for the event. Entry is online on the NCYC website (www.ncyc.net.au) using TopYacht Entry System (TES).
- 3.2 Entries for series, regattas and special events shall be completed no later than one and a half hours before the warning signal. By completing TES each skipper declares that they have complied with the following:
 - 3.2.1 Current safety category compliance.
 - 3.2.2 Current \$10,000,000 (ten million dollar) public liability insurance.
 - 3.2.3 Read and understand the Newcastle Harbour Safety Information Book and complete the Harbour Safety Declaration.
 - 3.2.4 A current IRC certificate if applicable.
 - 3.2.5 Payment of entry fee if applicable.
 - 3.2.6 Completed crew list.
- 3.3 Compliance with 3.2 is mandatory for entry.
- 3.4 The Organizing Authority may at its absolute discretion accept entries from yachts substantially complying with Category 4 or 7 PLUS as applicable. Such entry may be subject to any condition the Organising Authority may impose at its absolute discretion and no protest shall be made in respect to any such decision.
- 3.5 Late entries may be accepted subject to Sailing or Race Committee approval and shall be accompanied by any late fees levied.

4.0 TIMES

- 4.1 Time limits with Time Limit Expired scoring, shall apply to the following races:
(This changes RRS 35, A4.2 & A5)

Twilight races	2.5 hours
Sunday races	SpSOP, SSOP and WSOP 4.5 hours
- 4.2 Times Limit Expired scoring (TLE): points equal to the number of yachts finishing within time plus 30% of race entrants rounded up to a whole number but no more points than number of entrants.

5.0 STARTING SIGNALS AND PROCEDURES

- 5.1 Races will be started in accordance with RRS 26.

- 5.2 Last minute crew changes shall be given to the Race Officer by radio or phone text before the Warning Signal.
- 5.3 Race entrants shall confirm the yacht's intention to sail and its crew number aboard by hailing the RO. This shall be done by leaving the RO to starboard on the start line or sailing past the CV. If necessary, declarations may be made by VHF radio.
- 5.4 By contacting the RO, as above, a race entrant confirms the crew details entered on the TES are correct. If the crew aboard is not the same as crew so entered it may be scored DNS without a hearing (Amends RRS A5).
- 5.5 A boat shall not start later than 10 minutes after its Start Signal.

6.0 STARTS

- 6.1 NCYC Class Flags are as follows:
Offshore Start races Flag T
Harbour Start races Flag E
Ocean Pointscore races Flag W
- 6.2 NCYC Race Start Times are as follows:
Spring Short Ocean Pointscore (SpSOP) 1330 hours
Summer Short Ocean Pointscore (SSOP) 1330 hours
Winter Short Ocean Pointscore (WSOP) 1130 hours
Shorthanded Series 1130 hours
Ocean Pointscore (OP) 1000 hours *
Twilight Races (Twilight) 1730 hours

(* Check event sailing instructions for each race start time)

7.0 START/FINISH LINES

- 7.1 **For Inshore Starts** the start line shall be an imaginary line from a mast carrying an Orange Flag on the Committee Vessel, or from a shore position, displaying the start signals in the vicinity of Scratchley's Restaurant and the East Cardinal Mark (ECM) opposite unless changed in the SIs.
- 7.2 **For Inshore Finishes** the finish line shall be an imaginary line from a mast carrying an Orange Flag on the CV, or from a shore position, in the vicinity of Scratchley's Restaurant and the East Cardinal Mark (ECM) opposite unless changed in the SIs.
- 7.3 **The Twilight Sweepstake and Pursuit Race** finish line shall be an imaginary line from a mast carrying an Orange Flag in the vicinity of Scratchley's Restaurant and the ECM opposite.
- 7.4 **For Offshore Races** the start/finish line shall be an imaginary line from the mast carrying an Orange Flag on the CV and the Pin. The Pin Mark will be a yellow conical inflatable buoy approximately 1 metre in diameter.

8.0 MARKS AND COURSE

- 8.1 NCYC marks are orange inflatable conical buoys approximately one (1) metre in diameter.
- 8.2 An orange inflatable buoy with a black band around it will be used for course alterations.
- 8.3 For inshore starts, the position of the first mark may be given by the RO as a bearing and distance from the Harbour entrance PLM0.
- 8.4 In the event that a mark has moved or is missing RRS 33 & 34 will apply. Additionally, boats may be advised by the RO via VHF.

- 8.5 Code flag E or T will displayed on the Club flagpole approximately 1 hour before the warning signal and an announcement may be made in the Club on race days to indicate an Inshore or Offshore Start.
- 8.6 W/L races will be indicated by Code Flag 4 being displayed on the Club flagpole approximately 1 hour before the Warning Signal. An announcement may be made in the Club on days when the Offshore Start Windward/Leeward course is to be used.

9.0 PROTESTS, ARBITRATION and REDRESS

- 9.1 A yacht intending to lodge a protest form shall inform the RO on the Finish Line immediately on finishing the name of the vessel being protested. If the RO is not at the Finish Line the name of the vessel being protested must be lodged with the protesting yacht's Finishing Declaration (where applicable).
- 9.2 Protest forms shall be lodged as described by RRS Part 5. Protests shall be lodged within 1 hour of the last boat finishing. This changes RRS 61.3.
- 9.3 Protest Lodgment Forms are in the RRS or may be available from the NCYC website or the sailing office if attended.
- 9.4 Rule 44.1 is changed to permit a boat that has broken a rule of Part 2 or Rule 31 to take a penalty after racing but prior to any protest hearing. Her penalty shall be a scoring penalty as calculated in Rule 44.3(c).
- 9.5 Arbitration as per the RRS APPENDIX T applies to all NCYC racing unless otherwise stated by a separate NOR and SI.
- 9.6 Protest Hearings shall be held at a location and time advised by the Protest Committee.

10.0 HANDICAPS

- 10.1 A boat's handicap in PHS divisions shall be based on an arbitrary Time Correction Factor (TCF).
- 10.2 The PHS and IRC race results, or any other Handicap system raced under, for each yacht is determined on corrected times calculated by multiplying the elapsed time by the respective TCF.
- 10.3 Race/Class boats shall provide a copy of any amended rating certificate/s to the sailing office not less than one and a half hours prior to the warning signal of a race.
- 10.4 Boats shall notify the Sailing Office in writing at least seven days prior to a race any change (addition or alteration) to a boat's hull, appendages, equipment, sailing inventory or crew that may affect its performance. A boat failing to comply may be subject to action by the Race Committee (RC) under RRS 60.2(c) and 69.1(a).
- 10.5 Once published, the handicap adjustment method for PHS shall not be changed during a series.
- 10.6 The selection of a handicap method or adjustment system shall be at the discretion of the RC.
- 10.7 Applications in writing for reviews of the PHS handicap will be considered by the RC.
- 10.8 Handicaps or time offsets for pursuit races will not be given verbally from the Starter's Boat or Start Officials.
- 10.9 The Handicapper shall have the discretion to adjust any PHS handicap without notice.

11.0 POINTSCORES AND DISCARDS

- 11.1 Pointscores shall be conducted on the nominated races in the Sailing Program.
- 11.2 Discards will be 15% of completed races unless amended by other SI's (0.5 of a race is rounded up).
- 11.3 RRS Appendix A – Scoring: Low Pointscore shall apply to all Pointscores amended as follows:
 - 11.3.1 Appendix A 4.2 shall be replaced with A9.
 - 11.3.2 The number of completed races to constitute a series shall be 50% of the scheduled races.
 - 11.3.3 Annual Pointscore shall be conducted over the Winter, Spring, Summer and Ocean pointscore races scheduled.
 - 11.3.4 Any series ties shall be broken in accordance with RRS A8.
- 11.4 Annual Pointscore 'APS' Calculation (This rule amends RRS A1, A2, A4, and A9).
 - In each series a boat shall score points calculated in her division by taking the points between 1st & 3rd (or 1st & 2nd if less than 5 competing) divided by the number of scoring races, divided by the number of boats in that Division, multiplied by her divisional placing, multiplied by 10.
 - For results of a series to be counted towards the APS a boat shall contest at least 50% of completed races in that series. Further, a boat shall contest at least 50% of the completed series to score in the APS.
 - There will be one (1) drop in the APS. Boats not competing in a series shall score the maximum points for a series, i.e. 20 points.
 - The boat with the lowest total APS wins and others shall be ranked accordingly.

12.0 DISPENSATION

- 12.1 Dispensation may be awarded for up to 40% of races in a Series for Yachts representing NCYC in races or regattas organised by AS or another affiliated Club or Class.
- 12.2 Dispensation shall not be awarded for participation in equivalent Series Pointscore races organised by clubs other than NCYC.
- 12.3 Requests for Dispensation must be submitted in writing addressed to the Sailing Committee no later than 21 days prior to the first proposed race absence.
- 12.4 Dispensation will be a two stage approval process:
a) Nomination of the event and NCYC series pointscore anticipated to be missed prior to the event;
b) Proof of participation in the event via results to be posted at NCYC.
- 12.5 When Dispensation is approved series points for races missed will be calculated in the Series as the average for that Yacht's 5 best results elsewhere in the series.
- 12.6 Guidelines for dispensation will be considered around timeframes as:

NCYC Pointscore Series Races absent	Event Location	Examples of Events
Up to 1	Newcastle, Lake Macquarie or Port Stephens	50 Miler, 30 Miler, 24hr Race, Regattas, Class Titles at Port Stephens, Newcastle or Lake Macquarie
Up to 2	Sydney Harbour, Botany Bay or Pittwater	MHYC IRC Regatta, RSYS Annual Cruise, Class Titles
Up to 3	Other North/South NSW and interstate.	More likely to be annual regattas or "one-off" events.

The intention of these guidelines is to provide a framework for Skippers to plan their sailing season. If a boat can return to races at NCYC sooner than the requested Dispensation Period it should do so. Attention is drawn to RRS 2. In the interests of good seamanship, additional dispensation may be considered if extreme weather events or other misadventure prevents return to NCYC within the requested timeframe.

13.0 BOAT AND CREW ELIGIBILITY

- 13.1 RRS 46, 55 and 75 apply.
- 13.2 For the Female Helm Series, a female shall helm for scores to be eligible for the series.
- 13.3 For the Junior Sailor Day race, at least one person aboard must be under the age of 18 years on the day of the race to be eligible to receive a prize for that race.
- 13.4 For the Novice Helm Race, a Novice will be defined as a person who has not gained a first place position when helming in any race before.
- 13.5 For the Shorthanded Series, the total number of Persons on Board shall be two (2).
- 13.6 A boat not displaying the sponsor's advertising, if supplied, shall be scored DNS.

14.0 DIVISIONS AND CLASSES

- 14.1 The Sailing Committee shall allocate boats to racing Divisions, Classes or One Design Fleets.
- 14.2 New Classes or Racing Divisions may be formed if, in the opinion of the Sailing Committee, that the new Class or Division will be viable for the sailing season.
- 14.3 Classes and race Divisions may be disbanded when, in the opinion of the Sailing Committee, the number of starters does not make continuation viable. On disbandment, the Race Committee shall make equitable arrangements for reallocation of boats and their Pointscores.
- 14.4 Yachts cannot arbitrarily transfer from one division to another part way through a series.

15.0 RACE CONDITIONS

- 15.1 A motor may be used to arrive at the start line after the preparatory signal is displayed, however, after ceasing use of a motor and before starting to race the boat must take a 1 turn penalty which complies with RRS 44.2 prior to starting. A yacht observed by the RO infringing this SI will be scored as DNS.
- 15.2 All boats racing at NCYC will have engines running, and in neutral, when within the Harbour and when within 500m to seaward of the entrance during departure and arrival. A boat that cannot manoeuvre safely, and is in danger of hindering any commercial shipping, shall only use her engine FOR PROPULSION to clear such shipping. The use of the engine for propulsion must be logged and be lodged, together with a Declaration that no advantage resulted from the use of the engine, to the Race Officer after finishing the race. This alters RRS 42. Competitors are reminded that a restricted navigation zone exists on approach to and within Newcastle Harbour (refer Chart AUS207).
 - 15.2.1 If, when racing with NCYC, a yacht receives a "5 horn blast" from commercial shipping (meaning "I am in doubt about your action taken to avoid collision"), the offending boat may be disqualified from that race without hearing and that DSQ score shall not be excluded from the series pointscore. This changes RRS Appendix A5.
- 15.3 All boats shall monitor VHF emergency radio channel 16 for the duration of the race.
- 15.4 A retiring boat shall notify the RO as soon as possible.

16.0 NUMBER OF BOATS TO CONSTITUTE A RACE

- 16.1 Three starters will constitute a race.
- 16.2 One finisher will constitute a race.
- 16.3 For a race to be scored as a Pointscore Race, a Pointscore entrant must finish.

17.0 PRIZES

- 17.1 Prizes will be awarded at the discretion of the Sailing Committee and will be determined having regard to the number of entrants in a Race or Series.

18.0 CHANGES TO THE SAILING INSTRUCTIONS

- 18.1 For the purpose of RRS 90.2 (c) changes to Sailing Instructions the required time, is 1 hour prior to the Warning Signal of a race, unless otherwise stated in separate SIs.
- 18.2 Oral changes may be given on the water by the RO prior to the Warning Signal. This may be done via VHF radio.



RACE SERIES SPONSORS



CLUB MARINE

TWILIGHT SERIES

NCYC appreciates the generous support given by
our race series sponsors

Please support them where you can

NCYC LASER FLEET

NOTICE OF RACE & SAILING INSTRUCTIONS

1.0 RULES

- 1.1 The series will be governed by the rules as defined in *The Racing Rules of Sailing of World Sailing and the prescriptions of Australian Sailing Ltd.*
- 1.2 AS Special Regulations Part 2 for Off the Beach Boats will apply.
- 1.3 International Laser Class Association Class Rules will apply.

2.0 ELIGIBILITY AND ENTRY

- 2.1 The event is open to all boats of the Laser, Laser Radial and Laser 4.7 classes and will comprise a Spring pointscore series and a Summer pointscore series.
- 2.2 A boat must complete an entry for each series in which she intends to race and eligible boats must enter by the boat owner completing an entry online via a link posted by the Organising Authority at <http://www.ncyc.net.au/sailing/race-entry/>
- 2.3 All competitors must complete a Sailor Registration Form and competitors under 18 years of age at the commencement of the series must also complete the parental/guardian consent form and submit it with the Sailor Registration Form.
- 2.4 The Club reserves the right to refuse acceptance of a boat or a competitor.
- 2.5 All boat owners and competitors must be current General, Crew or Junior Members of Newcastle Cruising Yacht Club.
- 2.6 A competitor who is registered as a member of Australian Sailing Ltd (having a current sailor identification number) is not required to comply with SI 2.5 and may sail in races as a visitor for not more than 3 race days. Visiting boats shall not receive points for the series.
- 2.7 Before participating in the event, boat owners and competitors shall have read and understood the Risk Warning issued jointly by NCYC and NSW Roads and Maritime Services pursuant to the Civil Liability Act 2002.

3.0 ALLOCATION TO DIVISIONS AND CLASSES

- 3.1 The race committee may establish racing divisions and allocate boats to those divisions as it deems appropriate.
- 3.2 The race committee may disband a division for any reason at any time. If a division is disbanded the race committee shall make equitable arrangements for the re-allocation of boats.
- 3.3 Two or more divisions may be started together.

4.0 NOTICES TO COMPETITORS

- 4.1 Notices to competitors will be posted on the official notice board—located in the Club's side entry hallway..
- 4.2 A duplicate notice may be
 - (a) SMS/emailed to competitors
 - (b) posted on the official website of NCYC
 - (c) posted on the NCYC Laser & dinghy Facebook page.

5.0 CHANGES TO SAILING INSTRUCTIONS

- 5.1 Any change to the Sailing Instructions will be posted no less than 90 minutes prior to the warning signal of a racing session it will affect.

6.0 SIGNALS MADE ASHORE

- 6.1 Signals made ashore will be displayed from the flag pole located near the waterfront of the Laser Compound.
- 6.2 When flag AP is displayed ashore, '1 minute' is replaced with 'not less than 20 minutes' in the race signal AP.
- 6.3 When Code Flag R is displayed ashore no competitor boats are permitted to leave the launching area.

7.0 SCHEDULE OF RACES

7.1 Twilight Racing will be held on Friday afternoons during Daylight Saving Time (DST) on each of the dates published in the NCYC event calendar that correspond to the event "LASER RACING".

Winter Racing will be held on Saturday mornings in Winter on each of the dates published in the NCYC event calendar that correspond to the event "LASER RACING"

7.2 The number of races per day shall not exceed 3.

7.3 The scheduled time of the warning signal for the Friday Twilight races is 1730. The scheduled time of the warning signal for Saturday Winter races is 1030. The warning signal for subsequent races will be made as soon as practicable after the finish of the preceding race.

8.0 CLASS FLAGS

8.1 The class flag for Laser/Laser Radial/Laser 4.7 will be a white flag with the red Laser Class insignia.

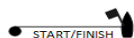
9.0 COURSE AREA

9.1 The course area will be on the waters of Newcastle Harbour.

10.0 COURSES

10.1 The following approximate diagram illustrates the starting/finishing line and the rounding marks.

*Course
Diagram*



10.2 The Race Committee Signal Boat will display a numeral pennant indicating the course to be sailed no later than the warning signal. The following table describes each course that may be signaled and whether a mark is to be rounded to port (P) or starboard (S).

COURSE	COURSE TO BE SAILED
1	Start - 1(P) - 2(P) - Finish
2	Start - 1(P) - 2(P) - 1(P) - 2(P) - Finish
3	Start - 1(P) - 2(P) - 1(P) - 2(P) - 1(P) - 2(P) - Finish

- 10.3 In the event that a numeral pennant is not displayed prior to the start, then the course to be sailed will be course 2.
- 10.4 Legs of the course will not be changed after the Preparatory Signal. This changes RRS 33.
- 10.5 Immediately after finishing, a competitor shall promptly exit the triangles bounded by the start/finish line and marks 1 and 2 until the finishing line has been closed. This shall be signalled by the lowering of the Blue Flag on the Committee Vessel.
- 11.0 MARKS**
- 11.1 Marks 1 and 2 are rounding marks and will be round, blue, inflatable buoys.
- 11.2 The starting and finishing marks will be a round pink inflatable buoy at one end and the Race Committee Signal Boat at the other end.
- 12.0 THE START**
- 12.1 Races will be started by using RRS 26
- 12.2 The Start Line will be between a staff displaying an orange flag on the Race Committee Signal Boat at the starboard end and the course side of the port end starting mark.
- 12.3 When an individual recall is signalled in accordance with RRS 29.1 the Race Committee may also hail the sail number of the boat/s being recalled. Failure to make a hail will not be grounds for redress. This changes RRS 62.1(a).
- 13.0 THE FINISH**
- 13.1 The Finish Line will be between the course side of the starboard end finishing mark and a staff displaying an orange flag on the race committee signal boat at the port end.
- 14.0 PENALTY SYSTEM**
- 14.1 RRS 44.1 is changed so that the Two-Turns Penalty is replaced by the One-Turn Penalty.
- 15.0 TIME LIMIT**
- 15.1 If no boat has passed Mark 1 within 20 minutes the race will be abandoned.
- 15.2 Boats failing to finish within 10 minutes after the first boat sails the course and finishes will be scored Time Limit Expired (TLE) without a hearing. The score TLE shall be the same as that for DNF. This changes RRS 35, A4 and A5.
- 16.0 PROTESTS, ARBITRATION AND REQUESTS FOR REDRESS**
- 16.1 Protest forms are available near the official notice board. Protests and requests for redress or reopening shall be delivered to a member to the NCYC Laser Committee or the Race Officer. This changes RRS 61.3.
- 16.2 The protest time limit is 60 minutes after the last boat has finished the last race of the day or the Race Committee signals no more racing today, whichever is later.
- 16.3 Breaches of Sailing Instructions 1.3, 4.2, 18.3, 18.4 and 19.1 will not be grounds for a protest by a boat. This changes RRS 60.1(a).
- 16.4 RRS 44.1 is changed to permit a boat that has broken a rule of Part 2 or RRS.31 to take a penalty after racing but prior to any protest hearing. Her penalty shall be a scoring penalty calculated in accordance with RRS 44.3(c).
- 16.5 Arbitration as per the RRS APPENDIX T applies to all NCYC Laser racing unless otherwise stated by a separate NOR and SI.
- 16.6 *An interested party* may be a member of the protest committee, however, an *interested party* shall not take any further part in the hearing except as a witness if a *party* to the hearing objects at the beginning of the hearing. This changes RRS 63.4.

17.0 SCORING

- 17.1 The series shall include a scratch result pointscore and a handicap result pointscore.
- 17.2 A boat's handicap shall be based on an arbitrary Time Correction Factor (TCF). A boat's handicap score is then determined by its place relative to other boats based on corrected time. Corrected time is calculated by multiplying the boat's elapsed time by the TCF.
- 17.3 The selection of a handicap method or adjustment system shall be at the discretion of the race committee.
- 17.4 Discards will be 15% of completed races (0.5 of a race is rounded up).
- 17.5 A boat that will be absent from races as a result of representing NCYC in another regatta for the Laser class may, prior to the absence, submit a request in writing for the award of average points for the races missed. The NCYC Laser Committee shall consider the request and may, in its absolute discretion, grant or deny the request. If the request is granted average points shall be calculated in accordance with RRS A10(a).
- 17.6 A boat that does not race because its owner/regular skipper volunteers at the request of the race committee to assist with the management and conduct of races shall be granted average points for those races calculated in accordance with RRS A10(a).

18.0 NUMBER OF BOATS TO CONSTITUTE A RACE

- 18.1 Three starters will constitute a race.
- 18.2 One finisher will constitute a race.
- 18.3 For a race to be scored as a Pointscore Race, a Pointscore entrant must finish.

19.0 SAFETY REGULATIONS

- 19.1 Before going afloat to race competitors shall enter their details in the "On Water Register" which can be accessed via the event webpage.
- 19.2 Upon returning to shore competitors shall sign-off the "On Water Register". This shall be done as soon as reasonably practicable, but not later than 30 minutes after the finishing time of the last boat in the last race conducted that day.
- 19.3 Once afloat, prior to the first race, competitors shall sail close by the stern of the Race Committee Signal Boat and hail the sail number of the boat. The Race Committee shall acknowledge the hail.
- 19.4 A boat being sailed by a competitor who does not comply with SIs 18.1 or 18.2 shall have 2 points added to each of her race scores for the day by the Race Committee without a hearing. This changes RRS 35 and A6.
- 19.5 When Code Flag R is displayed on the Race Committee Signal Boat, all boats shall immediately return to shore.

20.0 SUPPORT BOATS

- 20.1 Team leaders, coaches and other support personnel shall stay outside areas where boats are racing from the time of the preparatory signal for the first class to start until all boats have finished or retired or the Race Committee signals a postponement, general recall or abandonment. This will apply at all times except when asked to assist by the Race Committee.

21.0 DISCLAIMER OF LIABILITY

- 21.1 Competitors participate in the event entirely at their own risk. See RRS 4, Decision to Race and AS Special Regulations Part 2, 1.02 Responsibilities.

22.0 INSURANCE

- 22.1 Each participating boat shall be insured with valid third-party liability insurance with a minimum cover of AUD\$10,000,000 per incident or the equivalent.



NCYC SAILING ACADEMY



The NCYC is very pleased to introduce the new TACKERS dinghy learn to sail program for kids aged 7 to 12 years.

Children start at **Tackers 1 – Having Fun** & then move up to **Tackers 2 – Tricks & Techniques** and finally progress to **Tackers 3 – Sailing Fast!**

Each level comprises 20 hours of tuition from experienced and Australian Sailing qualified Instructors & Assistant Instructors.
All boats and sailing equipment is supplied.

Loads of details are available on the website or contact the Sailing Office for more information.

Tel: 4940 8188 E: sailingacademy@ncyc.net.au

www.ncyc.net.au



RACE SERIES SPONSORS

BOWLINE

WICKHAM

The epitome of coastal living



www.bowlinewickham.com.au

NCYC appreciates the generous support given by our
race series sponsors
Please support them where you can

NCYC YACHT REGISTER

Club Sail No	Alternate Sail No	Boat Name	Owner
N1	M35	<i>Anarchie</i>	P Hannan
N2		<i>Scuffy</i>	R Fleck
N3	4057	<i>Aurora</i>	M Holley
N6		<i>Margaritaville</i>	P O'Rourke
N7	11011	<i>Anger Management</i>	P Arnall
N9		<i>Jacaranda</i>	M Morgan
N10		<i>Freyja</i>	R Lees
N12		<i>Paloma</i>	B McNair
N13		<i>Dandaloo II</i>	M McDonald
N14		<i>Bluemoon</i>	J Peschar
N15		<i>Soca</i>	P Trevillian
N20		<i>Seven</i>	C Jordan
N22	S84	<i>Warrain</i>	R Hillery
N23		<i>Windcheeta</i>	K Vollmer
N26	2784	<i>Tamarillo</i>	R Knight
N29		<i>Scots Wha Hae</i>	V Johnston & D Peters
N31		<i>Farr Away</i>	W Reid
N32		<i>Ubuluku</i>	H Jones
N38	1164	<i>Cipriani</i>	G Campbell
N40	WS40	<i>Mako</i>	Mako Syndicate
N41		<i>Lady Irene</i>	V Neil
N47	M47	<i>Nutcracker</i>	P Bertholli
N111		<i>S/Y Solaris</i>	J Hardy

NCYC YACHT REGISTER cont.

Club Sail No	Alternate Sail No	Boat Name	Owner
N122		<i>Marta Jean</i>	S Rae
N349		<i>Schouten Passage</i>	J & R Howard
N370	370	<i>She's the Culprit</i>	G Picasso & G Bulmer
N1367		<i>Summer Salt</i>	T Gleeson
N5915		<i>Red Dog</i>	A Miller
	492	<i>Ansuz</i>	G Oldfield
	1339	<i>Nyssa</i>	M Smith
	3909	<i>Young and Old</i>	G Picasso
	4094	<i>Gregarious</i>	G Bolster
	5588	<i>Goodform</i>	J de Kock
	7113	<i>Trim</i>	C Laughlin
	8834	<i>Concealed Weapon</i>	B Kelly
	AUS 6135	<i>Rumbo</i>	G Holbert
	M16	<i>Shakti</i>	D Coulter
	M 45	<i>Equinox</i>	P & E Cunningham
	M 51	<i>Beyond Cool</i>	M Clement
	M 102	<i>Toy Story</i>	T Woods
	M 242	<i>Wallop</i>	P Hewson
	M 276	<i>The Apple</i>	M Graham
	M 400	<i>Ignition</i>	I Bower
	RF 5095	<i>Dare Devil</i>	S Ilzhofer

NCYC SUPPLEMENTARY REGISTER

Boat Name	Owner
After Hours	Andrew Henderson & Jude Brooks
Champagne on Ice	Paul & Alison Lobb
Cloud Catcher	John Smith
Daytripper	Andrew Watson
Emerald City	Rod & Trish Griffiths
Encore	Jason & Aneta Mackay
Freyja	Richard & Margaret Lees
Georgia	Neil & Charna Manson
Haven II	Paul Wootten & Trudi Allen
Isabella Blue	Mark & Helen Clare
Jigger	Rod Grant
Kahuna	Alasdair Smart & Lisa Everett
Kingdom	Tony & Gallene Poke
Lune de Miel	Grant Hackworthy
Mako (Black Pearl)	Jacko Goluzd
Marlena	Brian & Diane Gardoll
Oarsome	Phil Unicomb
Pacific Breeze	Kris Anderson & Richard Hooper
Pisces	Joe de Kock
Red Dog	Andrew & Harry Miller
Sans Souci III	Andrew & Vicki Hill
Scots Wha Hae	Valda Johnson & Doug Peters
Scuffy	Richard Fleck
Serendipity	Peter Thornton
Seychelles	John Stronach & Jacqui Soto
The Doctor	Darrell & Linda Hall
Woodwind	Paul Flanagan
Wyuna 2	Doug & Chris Olding

NCYC SUPPLEMENTARY REGISTER

Boat Name	Owner
<i>Charon</i>	J Abraham
<i>Maverick</i>	T McLeod
<i>Nigaloo</i>	L Curtis
<i>Shearwater</i>	S Jones
<i>Tasmanian</i>	J Govier
<i>Jim Holley</i>	NCYC
<i>Paul Gleeson</i>	NCYC
<i>Mark Boat</i>	NCYC
<i>Highfield Rib</i>	NCYC

Please contact the NCYC office for any changes or additions to the register.

PERPETUAL TROPHIES

Founders Day Shield NCYC Sailing Committee	Founders Day Short Ocean Race PHS Div 1, PHS Div 2, IRC
Newcastle Cruising Yacht Club Trophy	Spring Short Ocean Pointscore PHS Div 1
Newcastle Cruising Yacht Club Trophy	Spring Short Ocean Pointscore PHS Div 2
Newcastle Cruising Yacht Club Trophy	Spring Short Ocean Pointscore IRC
Newcastle Cruising Yacht Club Trophy	Summer Short Ocean Pointscore PHS Div 1
Newcastle Cruising Yacht Club Trophy	Summer Short Ocean Pointscore PHS Div 2
Newcastle Cruising Yacht Club Trophy	Summer Short Ocean Pointscore IRC
Newcastle Cruising Yacht Club Trophy	Combined Spring & Summer Short Ocean Pointscore PHS Div 1
Newcastle Cruising Yacht Club Trophy	Combined Spring & Summer Short Ocean Pointscore PHS Div 2
Gleeson Civil Engineering Trophy P & T Gleeson	Combined Spring & Summer Short Ocean Pointscore IRC
Midcoast Boat & Shipyard Trophy J de Kock	Ocean Pointscore PHS Div 1
Midcoast Boat & Shipyard Trophy J de Kock	Ocean Pointscore PHS Div 2
Gleeson Civil Engineering Trophy P & T Gleeson	Ocean Pointscore IRC
LMYC & NCYC Combined Ocean Pointscore Trophy Gill Finlay	Combined Ocean Pointscore PHS
The Lion Bird & Cabbage Series Trophy EJE Architecture	The Lion, Bird & Cabbage Series PHS
Gleeson Civil Engineering Trophy P & T Gleeson	The Lion Bird & Cabbage Series PHS
Independent Dental Trophy C & S Jordan	Christmas Pursuit Race

PERPETUAL TROPHIES cont.

Strata Products Trophy T Lobb	Winter Short Ocean Pointscore PHS Div 1
Sir Allen Fairhall Memorial Trophy A Fairhall	Winter Short Ocean Pointscore PHS Div 2
Gleeson Civil Engineering Trophy P & T Gleeson	Winter Short Ocean Pointscore IRC
Tenacity Award NCYC	Award to a Club Member for Tenacity
Allen Fairhall Gun Boat Trophy A Fairhall	NCYC Fastest Boat
Founders Bowl P Hannan & G Keegan OAM	Overall Pointscore PHS Div 1
NCYC Cup B Hansen & T Michilis	Overall Pointscore PHS Div 2
IRC Trophy M Eggleston	Overall Pointscore IRC
Butler Business & Law Trophy Kym Butler	Best Performing NCYC yacht in the Sydney to Hobart Yacht Race
Junior Sailor Race Trophy Ric Bowker	A Short Ocean Race PHS Div 1 & Div 2
Tracey P Memorial Trophy E & G Thirkell	Lady Skipper Race
Friendship Cup NCYC Sailing Committee	A teams event between NCYC and LMYC (Total PHS HCP of best 3 from each club)



2019 – 2020 NCYC Club Sailing Calendar

Offshore

Spring Short Ocean Pointscore
 Club Marine Spring Twilight Series
 Farr 40 One Design Regatta
 Ocean Pointscore
 Summer Short Ocean Pointscore
 Shorthanded Series
 SailFest Newcastle Regatta
 Sail Port Stephens
 Winter Short Ocean Pointscore
 NSW Country Yachting Championships

Inshore (Elliott's)

2k Team Racing National Championship
 Thirkell Trophy—Youth Match Racing Regatta
 Elliott Spring Series
 She Sails Open Regatta
 Elliott Summer Series
 She Sails Development Regatta
 National Sailing League Finals (Women & Youth)
 SailFest Newcastle Regatta
 Newcastle Youth Keelboat Championship
 Elliott Winter Series
 CrackerJack Cup—Open Match Racing Regatta

Off the Beach

Laser Spring Twilight Series
 Opti Green Fleet Spring Series
 Laser Summer Twilight Series
 Opti Green Fleet Summer Series
 Laser Winter Series

September 2019	Saturday, 19th October (Offshore) Ocean Pointscore—Newcastle to Port Stephens (Race 2)
7th-8th September (Inshore) 2k Team Racing National Championship	Sunday, 20th October (Offshore) Ocean Pointscore— Port Stephens to Newcastle (Race 3)
Sunday, 8th September (All) Blessing of the Fleet (Offshore) Spring Short Ocean Pointscore—Race 1 (Club) Season opening party	Wednesday, 23rd October (Offshore) Club Marine Twilight Series
Saturday, 14th September (Club) Safety & Sea Survival Course	Friday, 25th October (Lasers) Laser Twilight Series (Club) SOLAS Fundraiser Dinner
Sunday, 15th September (Offshore) Spring Short Ocean Pointscore—Race 2	Sunday, 27th October (Offshore) Spring Short Ocean Pointscore—Race 5
Sunday, 22nd September (Offshore) Ocean Pointscore—Moon Is. (Race 1)	Wednesday, 30th October (Offshore) Club Marine Twilight Series
28th & 29th September (Inshore) Thirkell Trophy— Youth Match Racing Regatta	November 2019
Sunday, 29th September (Offshore) Spring Short Ocean Pointscore—Race 3	Friday, 1st November (Lasers) Laser Twilight Series
October 2019	Sunday, 3rd November (Offshore) Spring Short Ocean Pointscore—Race 6
Sunday, 6th October October Long Weekend *Daylight Saving Time Begins	Wednesday, 6th November (Offshore) Club Marine Twilight Series
Wednesday, 9th October (Offshore) Club Marine Twilight Series	Friday, 8th November (Lasers) Laser Twilight Series
Friday, 11th October (Lasers) Laser Twilight Series	9th-10th November (Inshore) She Sails Open Regatta
Sunday, 13th October (Offshore) Female Helm Series—Race 1 (Offshore) Spring Short Ocean Pointscore—Race 4	Wednesday, 13th November (Offshore) Club Marine Twilight Series
Wednesday, 16th October (Offshore) Club Marine Twilight Series	Friday, 15th November (Lasers) Laser Twilight Series
Friday, 18th October (Lasers) Laser Twilight Series	16th & 17th November Farr 40 Regatta
	Sunday, 17th November (Offshore) Ocean Pointscore —Bird Island (Race 4)
	Wednesday, 20th November (Offshore) Club Marine Twilight Series

Friday, 22nd November (Lasers) Laser Twilight Series Supercars in Newcastle	January 2020
Sunday, 24th November (Offshore) Spring Short Ocean Pointscore—Race 7 Supercars in Newcastle	Sunday, 26th January Australia Day Long Weekend
Wednesday, 27th November (Offshore) Club Marine Twilight Pursuit	Friday, 31st January (Offshore) Club Marine Twilight Pursuit (Lasers) Laser Twilight Series
Friday, 29th November (Lasers) Laser Twilight Series	February 2020
Saturday, 30th November (Offshore) Ocean Pointscore—Newcastle to Pittwater (Race 5)	Sunday, 2nd February (Offshore) Summer Short Ocean Pointscore—Race 1
December 2019	Wednesday, 5th February (Offshore) Club Marine Twilight Series
Sunday, 1st December (Offshore) Ocean Pointscore—Pittwater to Newcastle (Race 6)	Friday, 7th February (Lasers) Laser Twilight Series
Monday, 2nd December (Youth) Celebration Evening	Saturday, 8th February (Offshore) Shorthanded Series—Race 1
Wednesday, 4th December (Offshore) Club Marine Twilight Series	Sunday, 9th February (Offshore) Summer Short Ocean Pointscore—Race 2
Friday, 6th December (Lasers) Laser Twilight Series	Wednesday, 12th February (Offshore) Club Marine Twilight Series
Sunday, 8th December (Offshore) Spring Short Ocean Pointscore—Race 8	Friday, 14th February (Lasers) Laser Twilight Series
Wednesday, 11th December (Offshore) Club Marine Twilight Pursuit	Saturday, 15th February (Offshore) Shorthanded Series—Race 2
Friday, 13th December (Lasers) Santa Sails a Laser Twilight Series	Sunday, 16th February (Offshore) Summer Short Ocean Pointscore—Race 3
Sunday, 15th December (Offshore) Christmas Pursuit (Cruising) Christmas Cruise (Club) Christmas Party	Wednesday, 19th February (Offshore) Club Marine Twilight Series
Thursday, 26th December—Boxing Day Rolex Sydney Hobart Yacht Race Live Feed in the Club	Friday, 21st February (Lasers) Laser Twilight Series
	Saturday, 22nd February (Offshore) Shorthanded Series—Race 3
	Sunday, 23rd February (Offshore) Summer Short Ocean Pointscore—Race 4 (Yachts) Female Skipper Series—Race 2

Wednesday, 26th February (Offshore) Club Marine Twilight Pursuit	Wednesday, 25th March (Offshore) Club Marine Twilight Pursuit
Friday, 28th February (Lasers) Laser Twilight Series	Friday, 27th March (Lasers) Laser Twilight Series
Saturday, 29th February (Offshore) Shorthanded Series—Race 4	Sunday, 29th March (Offshore) Summer Short Ocean Pointscore—Races 8 (Club) - End of Summer Party
March 2020	April 2020
Sunday, 1st March (Offshore) Summer Short Ocean Pointscore—Race 5	3rd-5th April National Sailing League Open Finals at RSYS
Wednesday, 4th March (Offshore) Club Marine Twilight Series	Saturday, 4th April (at Lake Macquarie Yacht Club) Friendship Cup sailed in Force 24 fleet
Friday, 6th March (Lasers) Laser Twilight Series	10th-13th April Easter Long Weekend
Saturday, 7th March (Inshore) She Sails Development Regatta Training Day Game Fishing Tournament	17th-19th April SailFest—Newcastle Regatta
Sunday, 8th March (Offshore) Summer Short Ocean Pointscore—Race 6 Game Fishing Tournament	Saturday, 25th April ANZAC Day
Wednesday, 11th March (Offshore) Club Marine Twilight Pursuit - Novice Helm Race	Sunday, 26th April Newcastle to Port Stephens Race
Friday, 13th March (Lasers) Laser Twilight Series	27th April—3rd May Sail Port Stephens
Saturday, 14th March (Inshore) She Sails Development Regatta - Race Day	May 2020
Sunday, 15th March (Offshore) Summer Short Ocean Pointscore—Race 7	Saturday, 9th May (Inshore) Newcastle Youth Keelboat Championship
Wednesday, 18th March (Offshore) Club Marine Twilight Series	Sunday, 10th May Mother's Day (Inshore) Newcastle Youth Keelboat Championship
Friday, 20th March (Lasers) Laser Twilight Series	Saturday, 16th May (Lasers) Winter Series
21st-22nd March (Inshore) National Sailing League Finals for Youth and Women	Sunday, 17th May (Offshore) Winter Short Ocean Pointscore—Races 1 & 2

Saturday, 23rd May (Lasers) Winter Series	July 2020
Sunday, 24th May (Offshore) Winter Short Ocean Pointscore—Races 3 & 4	Saturday, 18th July <i>*Sailing Presentation Night</i>
Saturday, 30th May (Lasers) Winter Series	25th-26th July (Inshore) CrackerJack Cup— Open Match Racing Regatta
Sunday, 31st May (Inshore) Youth Interclub Challenge	24th July—9th August Tokyo 2020 Olympic Games
June 2020	August 2020
6th-8th June <i>*Long weekend</i>	Saturday, 1st August Equipment Audit Day
Saturday, 13th June (Lasers) Winter Series	29th & 30th August The 'Asahi Regatta'
Sunday, 14th June (Offshore) Female Skipper Series— Race 3 (Offshore) Winter Short Ocean Pointscore—Race 5	September 2020
Saturday, 20th June (Lasers) Winter Series	Sunday, 6th September Fathers Day
Sunday, 21st June (Offshore) Winter Short Ocean Pointscore—Races 6 & 7	Sunday, 13th September <i>*2020-2021 season open day & Blessing of the Fleet</i>
Saturday, 27th June (Lasers) Winter Series	
Sunday, 28th June (Offshore) Winter Short Ocean Pointscore—Races 8 & 9 (Club) End of Season Party	



Image: Andrea Francolini

17-19 APRIL 2020

ALL CLASSES WELCOME!

SAILFEST

NEWCASTLE REGATTA

Including TP52s & Ocean Racers,
Cock of the Harbour
16ft Skiffs, Cats, Lasers,
Trailer Yachts, Match Racing
and Try-Sailing

BOOK YOUR MARINA BERTH
WITH THE MARINA MANAGER
ON TEL: 4940 8188



City of
Newcastle



A FESTIVAL OF SAILING FOR NEWCASTLE HARBOUR



NEWCASTLE CRUISING
YACHT CLUB

Tel: (02) 4940 8188 E: sailing@ncyc.net.au



NCYC CRUISING FLEET



Cruising with Newcastle Cruising Yacht Club appeals to boaters who enjoy the water at a leisurely pace, relaxing in an idyllic location and savouring the occasional sundowner.

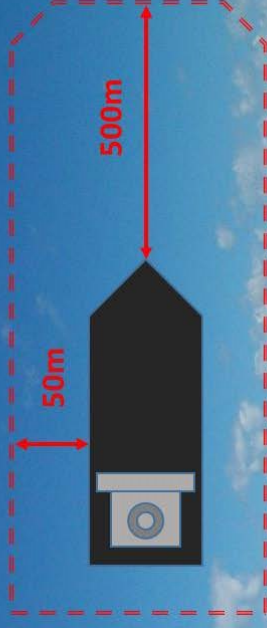
Participation in organised boating and social events is encouraged with the aim of sharing interesting, topical boating information and experiences.

Cruising Fleet social dinner held in the Club
Thursdays from 6pm - All welcome.
Divisional meetings held 6-8 weeks in the Trophy room.

For further information
Telephone (02) 4940 8188 or Email: sailing@ncyc.net.au

Crews are reminded that Newcastle Harbour and approaches are a restricted navigation zone. Recreational yachts need remain clear of commercial shipping. Sailing Instruction 15.2 provides the ability for race yachts to use their engines to move away from commercial shipping without incurring a penalty.

Minimum Distances



MARK DESCRIPTIONS – (approximate)

Mark	Latitude	Longitude
Redhead Mark	33 00.8 S	151 44.7 E
Moon Island Mark	33 04.8 S	151 40.3 E
Sygna Mark	32 53.3 S	151 49.8 E
Stockton Breakwall Mark	32 54.1 S	151 48.1 E
Hospital Mark	32 53.2 S	151 48.7 E
Mark A	32 55.9 S	151 48.4 E
Mark B	32.57.0 S	151 46.4 E
Mark C	32 57.2 S	151 48.1 E
Mark D	32 57.47 S	151 48.8 E
Mark E	32 56.3 S	151 47.7 E
Mark F	32 57.9 S	151 47.9 E
Marina Mark	32 55.4 S	151 45.8 E
Port Corp Mark	32 55.5 S	151 47.1 E

- Sygna Mark - Sygna
 - Stockton Breakwall Mark - Stockton
 - Hospital Mark - Hospital
 - PLM 0 - Port Lateral Mark (Aus Chart 208)
 - PLM 6 - Port Lateral Mark 6 (Aus Chart 208)
 - SLM 5 - Starboard Lateral Mark 5 (Aus Chart 208)
 - ECM - East Cardinal Mark (VQ) (Dyke Mark)
- (AUS Chart 208)

NCYC 2019-2020
SHORT OCEAN POINTSCORE SERIES COURSES
***** PASSING MARK REFER RRS 28.2**

SOUTHERN COURSES

Course No 1 (Intended for Northerly Breeze) * Denotes Passing Mark**

Division 1

Start - Mark E *** (P) - Mark D (S) - Mark F (S) - Mark A (S) - Mark F (S) - **Finish**

Division 2

Start - Mark E *** (P) - Mark D (S) - Mark F (S) - **Finish**

Course No 2 (Intended for Northerly & Southerly Breeze) * Denotes Passing Mark**

Division 1

Start - Mark A *** (P) - Mark F (P) - Mark A (P) - Mark F (P) - **Finish**

Division 2

Start - Mark A *** (P) - Mark F (P) - **Finish**

Course No 3 (Intended for Nor-Easterly Breeze) * Denotes Passing Mark**

Division 1

Start - Mark A *** (P) - Mark C (P) - Mark A (P) - Mark B (P) - **Finish**

Division 2

Start - Mark A *** (P) - Mark B (P) - **Finish**

Course No 4 (Intended for Nor-Easterly Breeze) * Denotes Passing Mark**

Division 1

Start - Mark A *** (P) - Mark B (P) - Mark A (P) - Mark B (P) - **Finish**

Division 2

Start - Mark A *** (P) - Mark B (P) - **Finish**

Course No 5 (Intended for Easterly & Westerly Breeze) * Denotes Passing Mark**

Division 1

Start - Mark A *** (P) - Mark B (P) - Mark D (P) - Mark B (P) - Mark D (P) - **Finish**

Division 2

Start - Mark A *** (P) - Mark B (P) - Mark D (P) - **Finish**

Course No 6 (Intended for Sou-Easterly Breeze) * Denotes Passing Mark**

Division 1

Start - Mark E *** (P) - Mark D (S) - Mark F (S) - Mark A (P) - Mark E (P) - Mark D (S) - Mark F (S) - **Finish**

Division 2

Start - Mark E *** (P) - Mark D (S) - Mark F (S) - **Finish**

***** During the approach to THIS MARK it is to be treated as a PASSING MARK.
Thereafter it remains a rounding mark. Refer RRS 28.2**

NCYC 2019-2020
SHORT OCEAN POINTSCORE SERIES COURSES
***** PASSING MARK REFER RRS 28.2**

SOUTHERN COURSES CONTINUED

Course No 7 (Intended for Sou-Easterly Breeze) * Denotes Passing Mark**
Division 1

Start - Mark E *** (P) - Mark D (P) - Mark E (P) - Mark D (P) - **Finish**

Division 2

Start - Mark E *** (P) - Mark D (P) - **Finish**

Course No 8 (Intended for Southerly Breeze) * Denotes Passing Mark**
Division 1

Start - Mark A *** (P) - Mark F (P) - Mark A (P) - Mark C (P) - **Finish**

Division 2

Start - Mark A *** (P) - Mark C (P) - **Finish**

Course No 9 (Intended for Sou-Westerly Breeze) * Denotes Passing Mark**
Division 1

Start - Mark A *** (P) - Mark B (P) - Mark C (P) - Mark A (P) - Mark B (P) - **Finish**

Division 2

Start - Mark A *** (P) - Mark B (P) - Mark C (P) - **Finish**

For Westerly Breezes the RO MAY decide to use Course 5

Course No 10 (Intended for Nor-Westerly Breeze) * Denotes Passing Mark**
Division 1

Start - Mark A *** (P) - Mark F (P) - Mark D (P) - Mark E (P) - Mark D (P) - **Finish**

Division 2

Start - Mark A *** (P) - Mark F (P) - Mark D (P) - **Finish**

Course No 11 (Intended for Nor-Westerly Breeze) * Denotes Passing Mark**
Division 1

Start - Mark E (P) *** - Mark D (P) - Mark E (P) - Mark D (P) - **Finish**

Division 2

Start - Mark E (P) *** - Mark D (P) - **Finish**

Course No 12 * Denotes Passing Mark**
All Divisions

Start - Mark A *** (P) - Redhead Mark (P) - **Finish**

***** During the approach to THIS MARK it is to be treated as a PASSING MARK.
Thereafter it remains a rounding mark. Refer RRS 28.2**

NCYC 2019-2020
SHORT OCEAN POINTSCORE SERIES COURSES
***** PASSING MARK REFER RRS 28.2**

STOCKTON COURSES

Course No 13 (Intended for Nor-Easterly & Sou-Westerly Breezes) * Denotes**

Passing

All Divisions

Start - Sygna (P) - **Finish**

Course No 14 (Intended for Nor-Easterly & Sou-Westerly Breezes) * Denotes**

Passing

All Divisions

Start - Sygna (P) - Stockton (P) - **Finish**

Course No 15 (Intended for Nor-Easterly & Sou-Westerly Breezes) * Denotes**

Passing

All Divisions

Start - Sygna (P) - Hospital (P) - Stockton (P) - **Finish**

Course No 16 (Intended for Nor-Easterly Breezes) * Denotes Passing Mark**

Division 1

Start – Sygna (P) - Hospital (P) - Stockton (P) - Sygna (P) -
Stockton (P) - **Finish**

Division 2

Start - Sygna (P) - Hospital (P) - Stockton (P) – **Finish**

Course No 17 (Intended for Sou-Westerly Breezes) * Denotes Passing Mark**

Division 1

Start – Stockton *** (S) - Hospital (S) - Sygna (S) - Stockton (S) - Sygna (S) -
Finish

Division 2

Start - Stockton *** (S) - Hospital (S) - Sygna (S) - **Finish**

INSHORE COURSES

Course No 18

Division 1

Start - Port Corp Mark (P) - Marina Mark (P) - Port Corp Mark (P) -
Marina Mark - **Finish**

Division 2

Start - Port Corp Mark (P) - Marina Mark (P) - **Finish**

***** During the approach to THIS MARK it is to be treated as a PASSING MARK.
Thereafter it remains a rounding mark. Refer RRS 28.2**

NCYC 2019-2020
SHORT OCEAN POINTSCORE SERIES COURSES
*** PASSING MARK REFER RRS 28.2

WINWARD-LEEWARD AND TRIANGLE COURSES

Course No 19

Division 1

Start - 1 (P) - 3 (P) - 1 (P) - Finish

Division 2

Start - 4 (P) - 3 (P) - 4 (P) - Finish

Course No 20

Division 1

Start - 1 (P) - 3 (P) - 1 (P) - 3 (P) - 1 (P) - Finish

Division 2

Start - 4 (P) - 3 (P) - 4 (P) - 3 (P) - 4 (P) - Finish

Course No 21

Division 1

Start - 1 (P) - 2 (P) - 3 (P) - 1 (P) - Finish

Division 2

Start - 1 (P) - 2 (P) - Finish

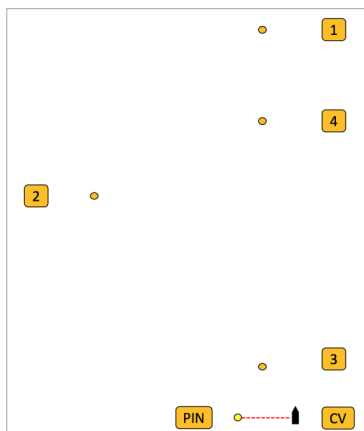
Course No 22

Division 1

Start - 1 (P) - 2 (P) - 3 (P) - 1 (P) - 3 (P) - 1 (P) - 2 (P) - Finish

Division 2

Start - 1 (P) - 2 (P) - 3 (P) - 1 (P) - Finish



***** During the approach to THIS MARK it is to be treated as a PASSING MARK. Thereafter it remains a rounding mark. Refer RRS 28.2**



RACE SERIES SPONSORS





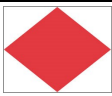






NCYC appreciates the generous support given by our
race series sponsors

Please support them where you can

NCYC RACE START PROCEDURES

Races will be conducted according to the Racing Rules of Sailing as published by World Sailing, especially Part 3 – Conduct of a Race. Times shall be taken from the visual signals; sound signals may be made to draw attention to visual signals.

SIGNAL	FLAG	MINUTES BEFORE STARTING SIGNAL & SOUND	COMMENTS
Answering Pennant		6+ Raised 2 sounds Lowered 1 sound	AP may be flown any time before the Starting Signal for any reason.
Warning		5 Raised 1 sound	Code Flag T (Tango) for NCYC Off-shore Starts
			Code Flag E (Echo) for NCYC Inshore Starts
			Laser Class Insignia Flag for NCYC Laser Starts
			Force 24 Class Insignia Flag for NCYC Force 24 Starts
Preparatory		4 Raised 1 sound	Code Flag P (Papa) may be used for all classes and divisions at NCYC
			Code Flag I (India) may be used for all classes and divisions at NCYC
			Code Flag U (Uniform) is used at NCYC. Refer to RRS 30.3
			Other flags as specified in the RRS may be used from time to time e.g. Z, Z with I or a Black Flag
One Minute		1 Preparatory Flag Lowered 1 sound	
Start		0 Class Flag Lowered 1 sound	

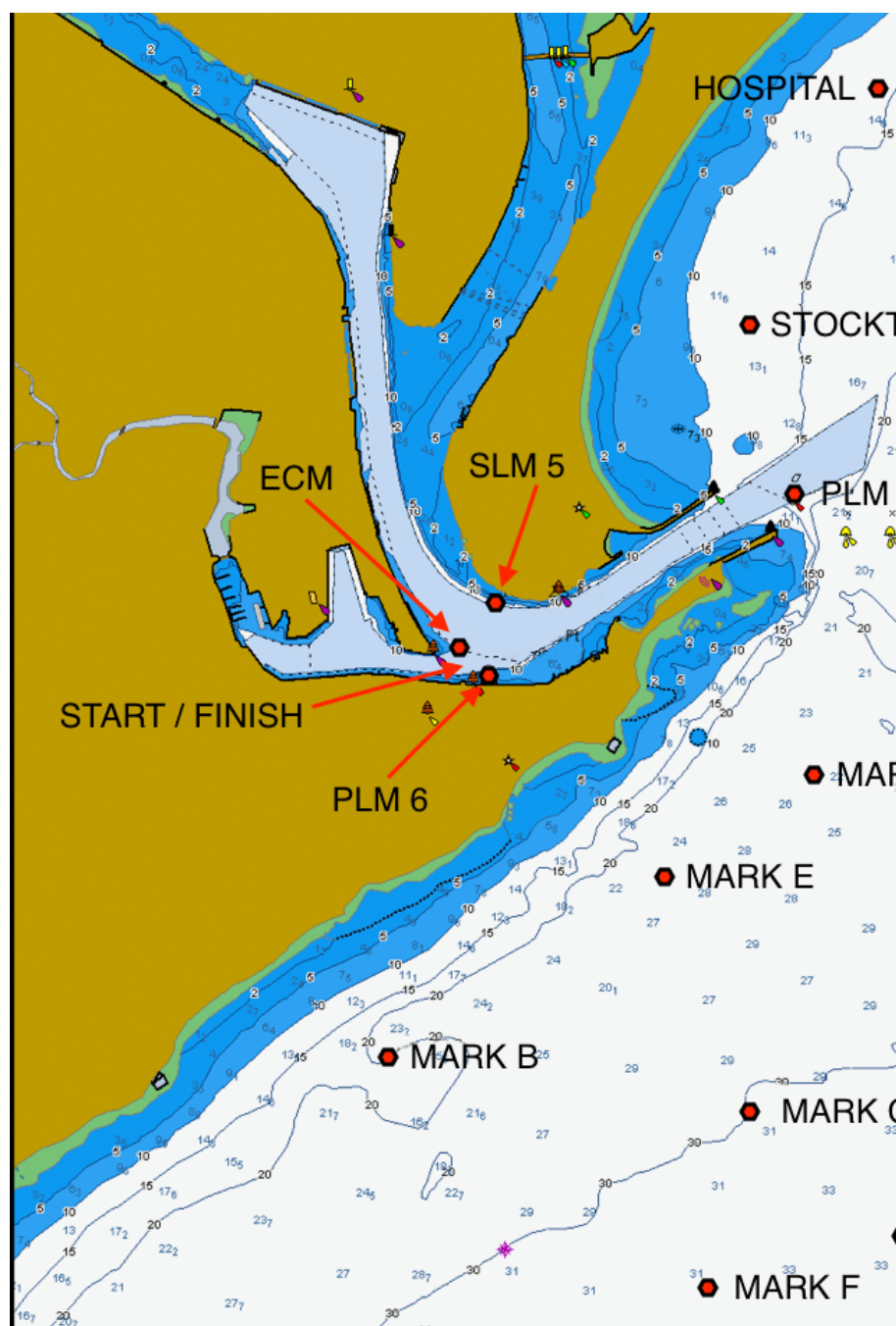
CRUISING FLEET CALENDAR

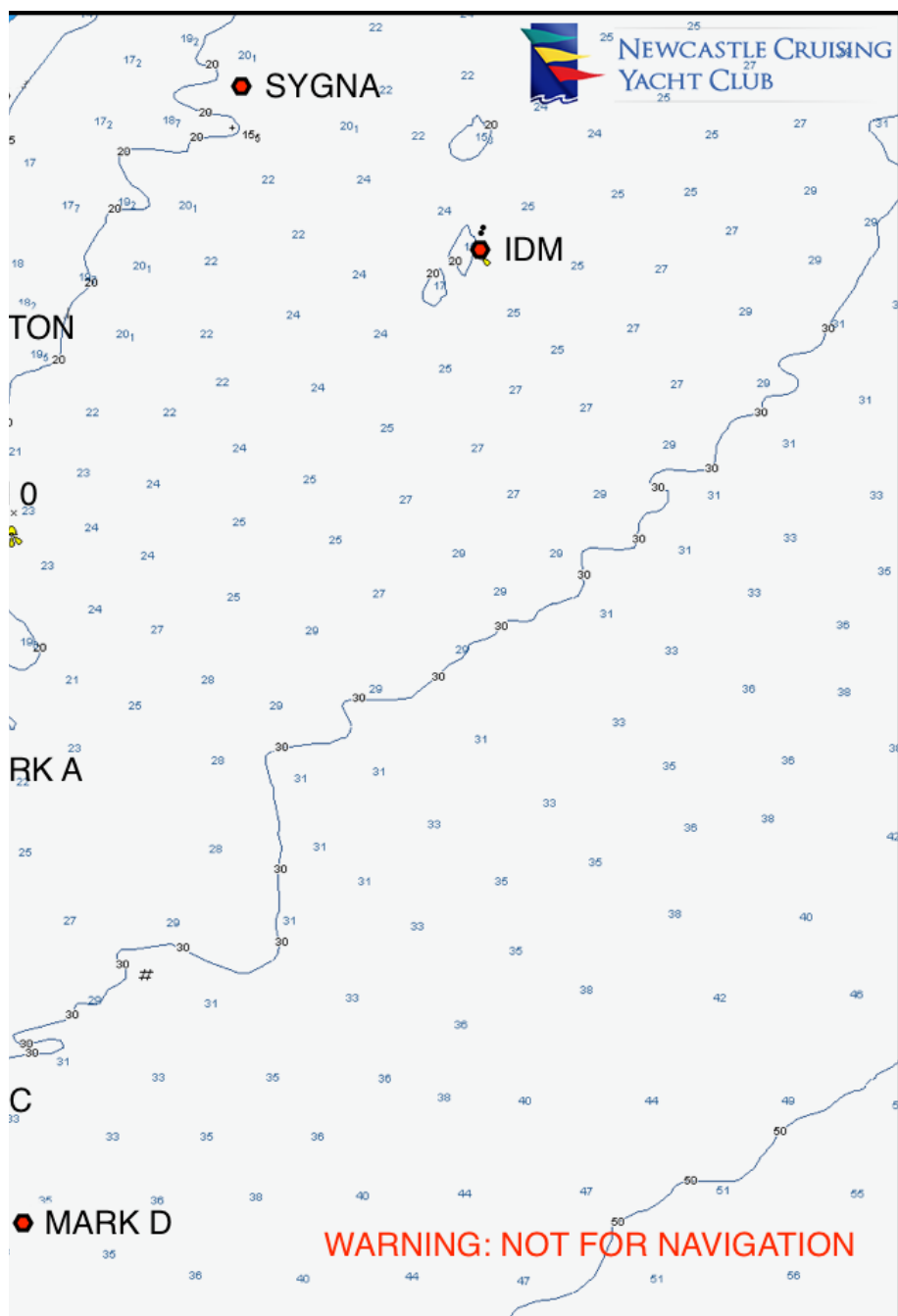


September 7th	Start of Season, Hunter River Raft Up
September 8th	NCYC Founders Day—Blessing of the Fleet & Season Open Party
October 5-7	“Raftober” Long Weekend Get Together
October 19-20	Port Stephens Cruise
November 22-24	V8 Supercar Rendezvous
November 22-24	Luskintyre Flying Weekend
November 30	Pittwater Cruise. Meeting up at RPAYC with NCYC.
December 15	Xmas Cruise and NCYC Members Party
December 31	NYE Fireworks Sydney Harbour
January 1-31	Annual Pilgrimage to Cowan Creek & Hawkesbury Region
February TBA	Weekend Raft Ups in the Lower Hunter
March 29	End of Summer Cruise & Party at NCYC
April 10-13	Easter Cruise to Lake Macquarie
May 16	Boating Skills Day
June TBA	“Float Your Boat” Lake Macquarie
June 28	End of Season Party
July 18-19	Christmas in July “Feast n Fly” at Luskintyre
August 15	Safety Review for Cruising Boats

NOTES

[illegible]





RACE SIGNALS

The meanings of visual and sound signals are stated below. An arrow pointing up or down (↑ ↓) means that a visual signal is displayed or removed. A dot (•) means a sound; five short dashes (-----) mean repetitive sounds; a long dash (—) means a long sound. When a visual signal is displayed over a class flag, the signal applies only to that class.

AP over a Numeral Pennant 1-9

Postponement of 1-9 hours from the scheduled starting time.



Abandonment Signals

N All races that have started are abandoned. Return to the starting area. The warning signal will be made 1 minute after removal unless at that time the race is abandoned again or

N over H All races are abandoned. Further signals ashore.

N over A All races are abandoned. No more racing today.

Recall Signals

X Individual recall.

First Substitute General recall. The warning signal will be made 1 minute after removal.

Shortened Course

S The course has been shortened. Rule 32.2 is in effect.

Preparatory Signals

P Preparatory Signal

I Rule 30.1 is in effect

Z Rule 30.2 is in effect

U Rule 30.3 is in effect in effect.

Black flag Rule 30.4 is

Changing the Next Leg

C The position of the next mark has been changed:

to starboard;

to port;

to decrease the length of the leg;

to increase the length of the leg.

Postponement Signals

AP Races not started are postponed. The warning signal will be made 1 minute after removal unless at that time the race is postponed again or abandoned

AP over H Races not started are postponed. Further signals ashore.

AP over A Races not started are postponed. No more racing today.

Other Signals

L Ashore; A Notice to competitors has been posted. Afloat; Come within hail or follow this vessel

M The object displaying this signal replaces a missing mark.

Y Wear a personal flotation device (see rule 40).

Blue flag or shape. This race committee vessel is in position at the finishing line.



NCYC thank the Sponsors for the 2018 - 2019 Sailing Season:



The epitome of coastal living
www.bowlinewickham.com.au