

Ocean Pointscore

Appendix 2 – Newcastle to Pittwater Race

Join us as we discover the Blue Water race course beyond Newcastle.

The Newcastle to Pittwater Race sees us leave Newcastle and turn South toward Sydney passing the coastal beaches, bluffs and caves of Merewether, Redhead, Catherine Hill Bay, Norah Head, Palm Beach and Lion Island.

The Ocean Pointscore is perfect for crews seeking longer offshore day races and can be a good foundation for crews preparing for Hobart.

See the event webpage –
<https://www.ncyc.net.au/offshore-racing/ocean-pointscore/>



NEWCASTLE CRUISING
YACHT CLUB

APPENDIX #5
NEWCASTLE PITTWATER RACE

1 ENTRY

- 1.1 Online entry via Top Yacht Entry System including crew details is required for all entrants – complete with an accurate Crew List and the CovidSafe Sailor Checklist.

2 THE START

- 2.1 The Warning Signal shall be displayed **at 0855 hrs.**
- 2.2 The Start will be between an orange staff displayed at Scratchley's Restaurant (or an RCV anchored in that vicinity) and the East Cardinal Mark opposite.
- 2.3 The Warning Signal shall be code flag W.
- 2.4 The Race Committee may use a rolling *start*. In this case, the RCV will display code flag L and proceed toward Pittwater until such time that conditions permit a start. A *Start Line* will then be between an orange staff on the RCV and a black/white checkered inflatable buoy.

3 THE COURSE

- 3.1 The Course is:
Start – Finish

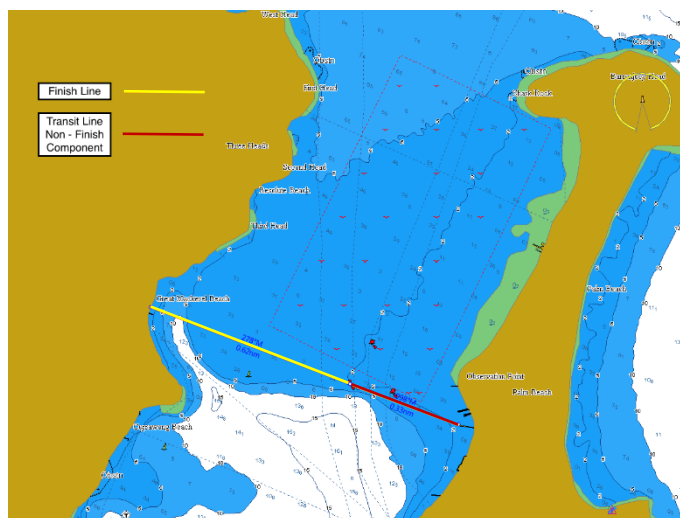
4 POSITION REPORTS

- 4.1 All boats shall provide mandatory position reports as per Sailing Instruction 8.

5 THE FINISH

- 5.1 The Finish Line shall be an extension of the transit from Palm Beach Public Wharf to the Shallow Water Mark at 33°35.62 S / 151°18.78 E, bearing 278°M (back bearing 098°M). When finishing yachts shall leave the Shallow Water Mark to port (i.e. remain West of the shallow water mark). A visual description of the Finish Line is provided below:

- 5.2 In the event that a RCV is not on station to finish the race, yachts will declare their Actual (GPS) Finish Time as per Sailing Instruction 11.2.



6 Log Off Procedure

- 6.1 Yachts must log off with the RCV / Finisher immediately after safely berthing after the finish on VHF Ch 77 or by mobile phone as per Sailing Instruction 11.2.

7 Additional Information

- 7.1 Overnight berthing at RPAYC may be at an additional cost to competitors. Competitors are responsible for securing marina bookings and can contact (02) 9998 3700 or waterfront@rpayc.com.au