



Bluewater Coastal Pointscore Series

Race 2 & 3

Pittwater to Newcastle

-

Newcastle to Pittwater
Yacht Race

Saturday 5 & Sunday 6 February 2022

Sailing Instructions



Event Website

<https://rpayc.com.au/sailing/bluewater-pointscore-series/>

Organised and Hosted By

Royal Prince Alfred Yacht Club

16 Mitala Street, Newport Beach NSW 2106

Tel: (02) 9998 3700

Email: sailing@rpayc.com.au Web: www.rpayc.com.au

1. RULES

- 1.1. Rules shall be as the Club Marine Bluewater Coastal Pointscore Series Notice of Race 2022. Additionally:
- 1.2. The racing will be governed by World Sailing Appendix WP of the RRS.
- 1.3. It is mandatory that competitors wear lifejackets and use harnesses between sunset and sunrise and at times of heightened risk.

2. STARTING TIMES

Race	Scheduled Start Time	Date
Pittwater to Newcastle Yacht Race	1000hrs	Saturday 5 February
Newcastle to Pittwater Yacht Race	1000hrs	Sunday 6 February

3. DIVISION FLAG

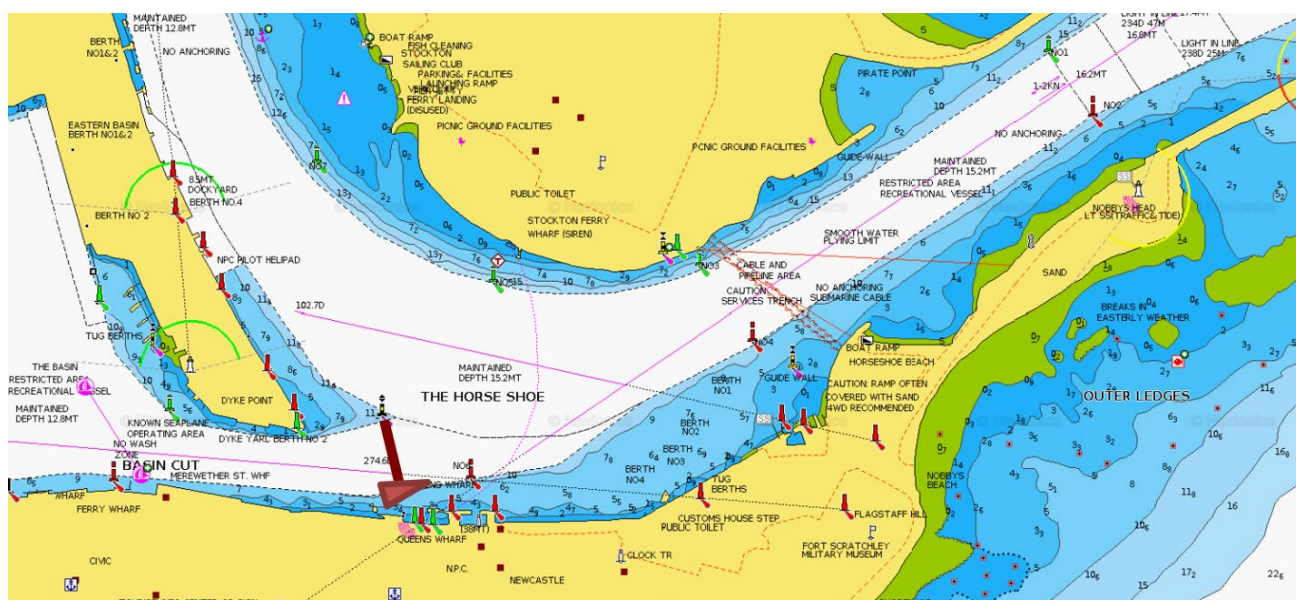
- 3.1. For all Club Marine Bluewater Coast Pointscore Series races there shall be one (1) division. The division flag shall be as follows; **Code Flag "R"**

4. REPORTING AT THE START

- 4.1. Boats shall call the Race Committee Vessel on VHF Channel 77 identifying their sail number and the number of persons on board (POB) prior to the warning signal.
- 4.2. Boats shall sail past the stern of the Race Committee Vessel with mainsail hoisted and advise the race officer of the day of their intention to start in the race.

5. THE START

- 5.1. **Race 2:** The start will be in the vicinity of the Lion Island and Barrenjoey Headland.
- 5.2. The starting line will be between a staff on the Race Committee Vessel displaying an orange flag and an orange inflatable mark at the other end of the line (normally the port end).
- 5.3. In the event of an unfavorable sea state the start line may be moved inside Pittwater in the vicinity of West Head and Mackerel Beach. The Race Committee may advise this change on VHF Channel 77.
- 5.4. **Race 3:** The Start will be between an orange staff displayed at Scratchley's Restaurant (or an RCV anchored in that vicinity) and the East Cardinal Mark opposite.



6. COURSES

- 6.1. **Race 2:** Start 1 – BR (pass P) – Finish 1.
- 6.2. **Race 3:** Start 2 - BR (pass S) – Finish 2.
- 6.3. All marks are to be rounded to Starboard unless otherwise indicated (P), denoting a Port rounding. View Appendix A for Descriptions.

- 6.4. Where a mark is missing or conditions do not permit a mark to be laid then the GPS position of such marks shall substitute the mark of the course. It is the responsibility of the Skipper/PiC to provide evidence that they sailed the course.
- 6.5. All boats are alerted to the contents of Appendix B – Ship & Ferry Activated Exclusion Zone.
- 6.6. All boats are alerted to the contents of Appendix C – Newcastle Harbour Regulations.

7. RETIREMENTS

- 7.1. Boats retiring or withdrawing from a race shall advise the Race Committee on 0427 477 854 or Sailing Office (02 9998 3700) as soon as practical.

8. THE FINISH

- 8.1. **Race 2:** The finish line will be in Newcastle Harbour between the starboard mark No. 5 in the vicinity of the Stockton Ferry Wharf and the port mark No. 6 off the end of Queens Wharf (and their continued transits).



- 8.2. **Race 3:** The finishing line will bear 331 degrees magnetic from Barrenjoey Light Station (Fl. (4)20s. Boats will have crossed the finishing line when the Barrenjoey light bears 151 degrees magnetic or less.
- 8.3. All boats shall advise the Race Committee of their finish time by SMS text on **0427 477 854** noting:
Boat Name,
Sail number and it's,
Finish time within 30 minutes of finishing.
- 8.4. Acknowledgement will be made by reply SMS within 45 minutes thereafter with the word "**received**".
- 8.5. In addition, each boat must report its sail number and finishing time on the RPAYC Declaration Form no later than 1800hrs on the Monday immediately after the race and submit this to the RPAYC Sailing Office.

9. TIME LIMIT

- 9.1. There shall be no time limit for the Club Marine Bluewater Coastal Series races.

10. DECLARATION FORM

- 10.1. All competitors who fail to comply with any part of the Sailing Instructions or the RRS must lodge a Declaration Form with the Race Control no later than 1800hrs on the Monday immediately after the race. Failure to do so will score the boat a Did Not Finish (DNF) unless the Race Committee decides otherwise.

11. COMMUNICATION AND POSITION REPORT SCHEDULE

- 11.1. The Race Committee (RC) may broadcast race information before and during the race and or reply to queries received where the information is of general assistance to the fleet. This information will not

be deemed “outside help” under the terms of RRS 41. Failure to receive communication from the RC shall not be grounds for redress. This amends RRS 62.1.

- 11.2. **All boats must maintain a continuous listening watch on VHF Channel 16 for the duration of each scheduled race.**
- 11.3. All radio (and phone messages) received, transmitted, or attempted to be transmitted must be entered in the boat’s log, or in a separate communications log.
- 11.4. Reporting Times
- 11.4.1. All boats shall make a **mandatory position reports**, while racing at **1500hrs, 2100hrs and 0830hrs**. Reports to be advised no later than 30 minutes after these times.
- 11.5. A boat shall advise the Race Committee of their position by SMS text on **0427 477 854** noting:
Boat Name,
Sail Number and its,
Position: latitude as a 4-digit number and longitude as a 5-digit number (without decimals of a minute), and whether proceeding **North or South**.
- 11.6. Position reports shall be made by satellite phone or mobile phone.
- 11.7. Acknowledgement will be made by reply SMS within 45 minutes thereafter with the word “received”.
- 11.8. A boat shall report their position in accordance with SI 11. Failure to comply may result in a penalty as detailed in SI 12 at the discretion of the Race Committee having regard to the circumstances (amends RRS 60.2).

12. PENALTIES

- 12.1. Between the hours of sunrise and sunset; a boat may take a penalty in accordance with RRS 44.1.
- 12.2. Between the hours of sunset and sunrise a Scoring Penalty shall apply. The scoring penalty shall be 10 minutes added to the boats elapsed time. (Amends RRS 44.3). A boat infringing in more than one incident shall receive a separate penalty for each infringement.
- 12.3. A boat takes a Scoring Penalty by declaring the incident(s) on their Declaration Form and submitting it to the RC in accordance with SI 11 (Amends RRS 44.3).
- 12.4. Reporting Penalties:
- 12.4.1. First Position Report missed – 20 minutes added to the boat’s elapsed time;
- 12.4.2. Subsequent missed position reports – 40 minutes added to the boat’s elapsed time.
- 12.5. Placings will be awarded after the imposition of penalties or granting of redress.
- 12.6. The imposition of penalties will affect the placing of other boats, which shall be advanced to fill all preceding places vacated by penalized boats, subject to tied, elapsed or line honors results. If two or more boats share the same placing after the application of penalties, the boat(s) with the least or no penalty shall be placed above the boat(s) with the greatest penalty. (Changes RRS 44.3c).

13. PRIZES

- 13.1. Provisional results will be published during the course of the race with final race results published on the Tuesday following the scheduled race.
- 13.2. Prizes may be awarded at the Annual Presentation.
- 13.3. Additional prizes may be awarded at the discretion of the Race Committee.

14. DISCLAIMER

- 14.1. The OA, the RC, the event sponsors and their respective representatives, officers, members and volunteers accept no liability whatsoever for any loss of life, property, personal injury or damage caused by or arising out of the Club Marine Bluewater Coastal Series races.
- 14.2. Once a boat has finished or retired from the race the OA, the RC, the event sponsors and their respective representatives, officers, members and volunteers discharge any further Duty of Care.
- 14.3. Owner and or the Person in Charge and all crew are aware and acknowledge by entering the race that they compete entirely and at their own risk.
- 14.4. Attention is drawn to the World Sailing (WS) Fundamental Rule 3 “Decision to Race” which states “The responsibility for a boat’s decision to participate in a race or to continue racing is hers alone”.

15. INSURANCE

- 15.1. All boats shall have a current Marine Legal Pubic Liability Insurance Policy for the duration of the race, with a sum insured of not less than AUD\$10 million (or its equivalent in another currency).
- 15.2. The Policy must state that the boat is insured for the racing in which it is participating in and that it is covered for at least the distance greater than the distance of the Race.

Appendix A – Mark Descriptions

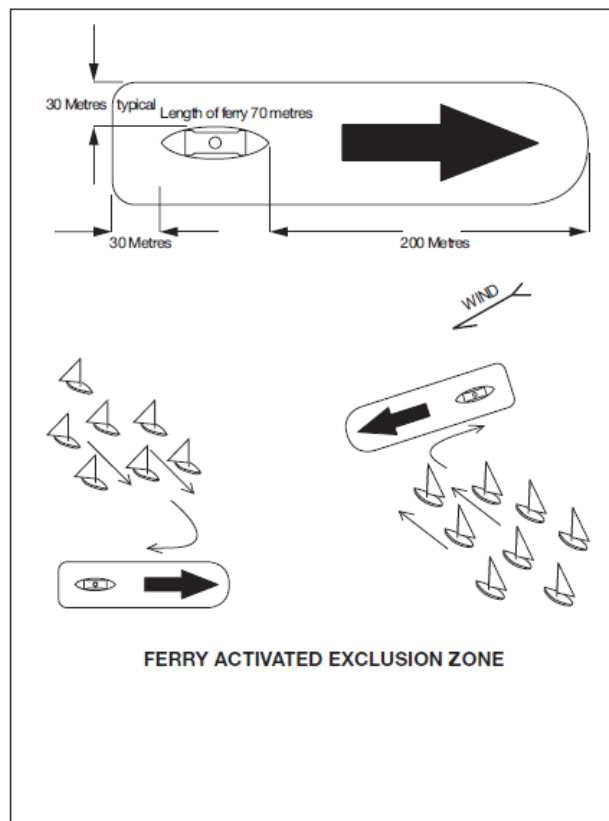
Mark descriptions are as follows:

- Start 1** An orange inflatable mark moored in the vicinity of the West Head, Lion Island and Barrenjoey Headland. In the event of adverse weather conditions, the start line may be set in Pittwater in the vicinity of Mackerel Beach.
- Start 2** The Start will be between an orange staff displayed at Scratchley's Restaurant (or an RCV anchored in that vicinity) and the East Cardinal Mark opposite.
- BA Bass Island** approximately at Lat 34° 27.9'S Long 150° 56.7'E. When rounding **BA** a boat shall not be closer than a distance of 0.1nm.
- BI Bird Island** at Lat 33° 14'S Long 151° 36.2'E (3.5nm NNE of Norah Head Light). When rounding **BI** a boat shall not be closer than a distance of 0.1nm.
- BR Bull Rock** approximately at Lat 33° 16.6'S Long 151° 35.0'E (0.7nm NNE of Norah Head Light). When passing **BR** a boat shall not be closer than a distance of 0.1nm.
- FL Flinders Island** approximately at Lat 34° 27.4'S Long 150° 55.8'E. When rounding **FL** a boat shall not be closer than a distance of 0.1nm.
- IDM Isolated Danger Mark** approximately at Lat 32° 53.830' S Long 151° 50.990' E (3nm east of Stockton Beach).
- LB Lady Bay.** Yellow spar buoy (YRM) at: Lat 33° 50.065' S, Long 151° 16.617'E.
- TGL Terrigal Mark.** Inflatable mark laid approximately at Lat 33° 27.6'S S, Long 151° 30.0' E.
- WR Wave Rider.** Yellow spherical buoy at Lat 34° 02.435'S, Long 151° 15.182'E. Moored approximately 1.5nm east of Cape Bailey.
- Finish 1** The finish line will be in Newcastle Harbour between the starboard mark No. 5 in the vicinity of the Stockton Ferry Wharf and the port mark No. 6 off the end of Queens Wharf (and their continued transits).
- Finish 2** The finishing line will bear 331° magnetic from Barrenjoey Light Station (FL (4)20s). Boats will have crossed the finishing line when the Barrenjoey light bears 151° magnetic or less.

Appendix B - Ship & Ferry Activated Exclusion Zone

NSW MARITIME BOAT PERSON'S BRIEF SHIP & FERRY ACTIVATED EXCLUSION ZONE

1. **Be Safe!**
2. **Observe NSW Collision regulations and in particular Rule 1(b) and Rule 2(a)(b) ie:**
Nothing in these Rules shall exonerate any vessel, or the owner, master or crew thereof, from the consequences of any neglect to comply with these Rules or of the neglect of any precaution which may be required by the ordinary practice of seamen, or by the special circumstances of the case.
In complying with these Rules due regard shall be had to all dangers if navigation and collision and to any special circumstances, including the limitations of the vessels involved, which may make a departure from these Rules necessary to avoid immediate danger.
What this means is that if you're about to be involved in a collision, having stood on or given way in accordance with the Rule; every party involved is responsible in taking avoiding action to prevent a collision.
3. Local Rules require sail craft to keep out of the way of ferries displaying the orange diamond. When necessary give priority to the Ferry. Pass well clear of the ferry.
4. Be mindful of larger ships' bow flare. When closing any vessel, to prevent being overrun ensure you remain within sight of the officer of the watch on the vessel's bridge. Beware of overhanging bows and other parts of ship that might obstruct this line of sight. This means that your vessel may disappear from sight inside 200-400 m from the bows of very large ships.
5. **Shipping Sound Signal Meanings:**
One short blast -
I am altering course to starboard (right).
Two short blasts -
I am altering course to port (left).
Three short blasts -
I am operating engines astern (stopping).
Five (or more) short blasts - I'm unsure of your intentions and I doubt whether you are taking enough avoiding action to avoid collision.
6. All competitors **must** maintain a minimum distance of **500m** from the bow of any ship and **200m** from the bow of any ferry and no less than **30m** from the sides/stern of any ship or ferry underway.



Appendix C – Newcastle Harbour Regulations

1. Newcastle Harbour is a very busy commercial port. A motor may be used by a yacht when racing to keep out of the way of commercial shipping (i.e. move out of the channel when a ship is approaching). RRS 42.3(i) allows propulsion using an engine, provided the boat does not gain significant advantage in the race (Amends text reference in diagram below).
2. All boats racing at NCYC will have engines running when within the Harbour and when within 500m to seaward of the entrance during departure and arrival. A boat that cannot maneuver safely, and is in danger of hindering any commercial shipping, shall only use her engine FOR PROPULSION to clear such shipping. This changes RRS 42. Competitors are reminded that a restricted navigation zone exists on approach to and within Newcastle Harbour (refer to Chart AUS207).
3. If when racing with RPAYC/NCYC, a yacht receives a "5 horn blast" from commercial shipping (meaning "I am in doubt about your action taken to avoid a collision"), the offending boat may be disqualified from that race without a hearing. This changes RRS Appendix A5.
4. *Diagram from NCYC Sailing Handbook:



5. The Organizing Authority will not accept any liability for material damage or personal injury or death sustained in conjunction with, prior to, during or after these races.
6. A condition of racing with us is to read the Harbour Safety Information booklet:
[Harbour Safety Information Booklet](#)
[Click HERE to complete the Harbour Safety Declaration](#)

Also see the other useful information –
[Look Out Ships About – Port Authority](#)
[Harbour Safety Module](#)

Club Marine Bluewater Pointscore Coastal Series

DECLARATION FORM

(to be completed in the event of a required reporting incident or infringement as below)

Race 1 | Race 2 | Race 3 | Race 4 | Race 5

To be submitted via email: sailing@rpayc.com.au

TO BE SIGNED BY THE OWNER OR HIS REPRESENTATIVE

Boat Name Sail No I am a member

Of Yacht Club I was on board and in charge of the above-mentioned Boat,
while sailing in the RACE on ___ / ___ / ____.

I declare that during the race there was infringement(s) as follows: (please initial and submit a detailed report)

- World Sailing Racing Rules of Sailing
- International Regulations for Preventing Collisions at Sea
- RPAYC Sailing Instructions and Special Regulations
- AS Special Regulations
- alterations made affecting Rating
since the boat was last measured or spare mainsail used

If any of the above items are initialed; a detailed report of the infringement or incident should accompany this declaration.

The Boat crossed the finishing line (Please insert details): -

Date of Finish

Watch Time

Watch Error

Corrected Finishing Time

Name and or Sail Number of the boat immediately ahead/.....

Name and or Sail Number of the boat immediately astern/.....

Recorded By

(Owner/Representative) Signed

To be submitted to: RPAYC Sailing Office or email: sailing@rpayc.com.au