

Newcastle to Port Stephens race

Join the fleet as we complete the journey north to Port Stephens for the Sail Port Stephens race week!

Race amongst more than forty other teams to the spectacular destination finish.

The goal is to get there! So the start line may move up the coast as we await wind, and/or the finish line may be positioned earlier to allow everyone to arrive in daylight.

Be sure not to miss the annual Newcastle to Port Stephens feeder race.

3 APRIL 2022

**NEWCASTLE TO PORT STEPHENS RACE
NEWCASTLE CRUISING YACHT CLUB
3RD APRIL 2022**

1 RULES

- 1.1 The regatta will be governed by the rules as defined in *The Racing Rules of Sailing* (RRS) as published by World Sailing and the prescriptions and amendments made by Australian Sailing.
- 1.2 Yachts shall comply with the current Australian Sailing Special Regulations Category 4.
- 1.3 Yachts sailing in IRC Division shall comply with the current IRC Rules Parts 1, 2 and 3.

2 RACE CONDITIONS

- 2.1 Newcastle Harbour is a very busy commercial port. A motor may be used by a yacht while racing to keep out of the way of commercial shipping (i.e. move out of the channel when a ship is approaching). RRS 42.3(i) allows propulsion using an engine, provided the boat does not gain significant advantage in the race.
- 2.2 All boats racing at NCYC will have engines running within the Harbour and when within 500m to seaward of the entrance during departure and arrival. A boat that cannot manoeuvre safely, and is in danger of hindering any commercial shipping, shall only use her engine FOR PROPULSION to clear such shipping. This changes RRS 42. Competitors are reminded that a restricted navigation zone exists on approach to and within Newcastle Harbour (refer to Chart AUS207)
- 2.3 If when racing with NCYC, a yacht receives a “5 horn blast” from commercial shipping (meaning “I am in doubt about your action taken to avoid a collision”), the offending boat may be disqualified from that race without a hearing. This changes RRS Appendix A5.
- 2.4



3 NOTICES TO COMPETITORS

- 3.1 Notices to competitors will be posted on the official notice board located on the event webpage – <https://www.ncyc.net.au/offshore-racing/newcastle-to-port-stephens-race/>
- 3.2 The race frequency shall be VHF Ch 80. This channel may be used by the race committee to communicate with competitors and/or broadcast general information throughout the event.

4 CHANGES TO SAILING INSTRUCTIONS

- 4.1 Any change to the sailing instructions will be posted before 0800 hrs on the day it will take effect.

5 SIGNALS MADE ASHORE

- 5.1 Signals made ashore will be displayed from the flag pole. The event flag pole will be on the NCYCs Floating Shed on F-arm of the marina.
- 5.2 When flag AP is displayed ashore, '1 minute' is replaced with 'not less than 30 minutes' in the RRS Race Signals.

6 SCHEDULE OF EVENTS

- 6.1 The following schedule is indicative only and may be varied at the discretion of the Race Committee:

Date	Time	Event
<i>Saturday, 2nd April 2022</i>	From 1200 hrs	One night free berthing offered to visiting competing yachts (subject to booking and availability)
<i>Sunday, 3rd April 2022</i>	0730 hrs	NCYC Club Opens for Breakfast/Coffee
	0830 hrs	Competitor Briefing at NCYC Clubhouse
	0955 hrs	First Warning Signal
	ASAP After Racing	Presentation & Social Function at Broughton's Function Room – d'Albora Marinas, Nelson Bay

7 SIGNING ON

- 7.1 Each race entrant shall make contact with the Race Committee Vessel (RCV) on VHF Channel 80 when at the start line or when exiting the Harbour (whichever comes first) confirming her intention to race and the number of persons on board (POB).
- 7.2 By reporting in with the RCV, a race entrant declares that crew details have been correctly entered on the TopYacht Entry System (TES) and that it is in compliance with the entry requirements. If the number of POB declared does not match the data entered into TES, the entrant may be scored Did Not Start without a hearing. This changes RRS Appendix A4.

8 THE START

- 8.1 Races will be started in accordance with RRS 26. The Warning Signal will be code flag “W”.
- 8.2 The Start Line will be an imaginary line between a staff displaying an orange flag on the RCV in the vicinity of Queens Wharf Brewery and the Starboard Lateral Mark No 5 in the vicinity of Stockton Ferry Wharf.
- 8.3 A boat starting later than 5 minutes after her starting signal will be scored Did Not Start without a hearing. This changes RRS Appendix A4.
- 8.4 As an alternative to SI 8.2, the Race Committee may direct the fleet to commence motoring towards the Finish until such time as the Race Committee considers conditions appropriate to start the race. Should this occur, a Start Line will be created offshore between a staff displaying an orange flag on the RCV and a yellow inflatable buoy. Yachts will start the race by crossing the line in the direction of the finish. This changes the course by deleting any marks of the course that are to the South of the Start Line.

9 THE COURSE

- 9.1 The course will be identified by a numeral pennant displayed by the RCV. Courses will be as follows:

Course Flag	Course	Finish Description
1	Start – Stockton (S) – Sygna (S) – Point Stephens Gate – Finish	Finish at D’Albora Marina.
2	Start – Stockton (S) – Sygna (S) – Finish at Point Stephens Gate	Finish at Point Stephens Gate.

- 9.2 See Appendix A for Course Diagram for Newcastle Departure
- 9.3 See Appendix B for Finish Locations
- 9.4 Competitors are required to submit a Finish Declaration when finishing at the designated finishing line. The Finish Declaration includes –
- Actual Finish Time (GPS Local Time) ; and
 - A photograph of navigation equipment showing both the time and lat/long coordinates.

Finish Declarations are to be made via the event website –

<https://www.ncyc.net.au/offshore-racing/newcastle-portstephens-race/>

10 MARK DESCRIPTIONS

10.1 Mark Descriptions as follows:

Mark	Location	Description
<i>Stockton</i>	32 54.20 S / 151 48.10 E	Yellow
<i>Sygná</i>	32 53.30 S / 151 49.80 E	Yellow
<i>Point Stephens Gate</i>	an imaginary gate running from Point Stephens Lighthouse at a Bearing of approximately 135° magnetic at a distance of approx. 0.7 nautical miles. The seaward end of Point Stephens Gate is located at approximately 32°45.40 S 152°12.50 E.	See Appendix B

10.2 To sail through Point Stephens Gate, yachts must leave the seaward end of the gate to Starboard (i.e. sail between the seaward end of the gate and Lighthouse). Note that this gate may be used as a finish line whether or not it was the intention at the Start.

11 THE FINISH

11.1 Finish Line #1 will be between the green navigation mark on the breakwall at d'Albora Marina Nelson Bay and an inflatable mark approximately 200m to the north.

11.2 Finish Line #2 will be Point Stephens Gate

11.3 Courses may be shortened at any part of the course. Yachts shall finish between the Race Committee vessel displaying Code Flag "S" and the inflatable buoy moored nearby, or the nearest point of land if no mark is laid. This changes RRS 32 and Race Signals.

11.4 Competitors are required to submit a Finish Declaration when finishing at the designated finishing line. The Finish Declaration includes –

- Actual Finish Time (GPS Local Time) ; and
- A photograph of navigation equipment showing both the time and lat/long coordinates.

Finish Declarations are to be made via the event website –

<https://www.ncyc.net.au/offshore-racing/newcastle-portstephens-race/>

12 RETIREMENTS

12.1 Yachts retiring from racing shall notify the Race Committee at her earliest opportunity and will then notify that she has safely arrived in port. Communication methods include VHF Channel 80 & mobile 0418 257 828.

13 TIME LIMITS

13.1 ***Time Limits are as follows:***

Type	Time Limit
Race Time Limit	1730hrs – Sunday 3 rd April 2022
Protest Time Limit	60 minutes after the last boat finishes

13.2 Boats failing to finish within the Race Time Limit will be scored Time Limit Expiry (TLE) which will be points equal to the number of yachts finishing within the time limit plus 30% of the number of starters rounded up to the nearest whole number without a hearing, but not more than the score for Did Not Finish (DNF). This amends RRS 35, A4 and A5.

14 PROTESTS, ARBITRATION AND REQUESTS FOR REDRESS

- 14.1 Protests and requests for redress or reopening shall be delivered within the appropriate time limit.
- 14.2 For each class, the protest time limit is 60 minutes after the last boat has finished the last race of the day or the race committee signals no more racing today, whichever is later.
- 14.3 Notices will be posted on the official notice board no later than 30 minutes after the protest time limit to inform competitors of hearings in which they are parties or named as witnesses and where the hearings will be held.
- 14.4 An Arbitration Hearing may be called as per RRS Appendix T.
- 14.5 A request for redress based on a protest committee decision shall be delivered no later than 30 minutes after the decision was posted. This changes RRS 62.2.

15 DISCLAIMER OF LIABILITY

- 15.1 By lodging an entry, the owner agrees to be bound by the rules and conditions of this Notice of Race and the Sailing Instructions.
- 15.2 By lodging an entry, the owner acknowledges that all those participating in the series do so at their own risk and responsibility. Competitors must acknowledge this prior to participating and release the NCYC and its sponsors and their respective officers, employees, volunteers, and members from all liability by completing the online registration form as a part of the entry process. Specific attention is drawn to RRS Fundamental Rule 4, which states: "The responsibility for a boat's decision to participate in a race or to continue racing is hers alone"
- 15.3 By lodging an entry, the owner gives absolute right and permission for any photographs and/or video footage of the yacht and crew to be published in any media for any editorial, publicity or advertising purposes.

16 FURTHER INFORMATION

- 16.1 For further information please contact us:

Sailing Office

02 4940 8188

0418 257 828

sailing@ncyc.net.au

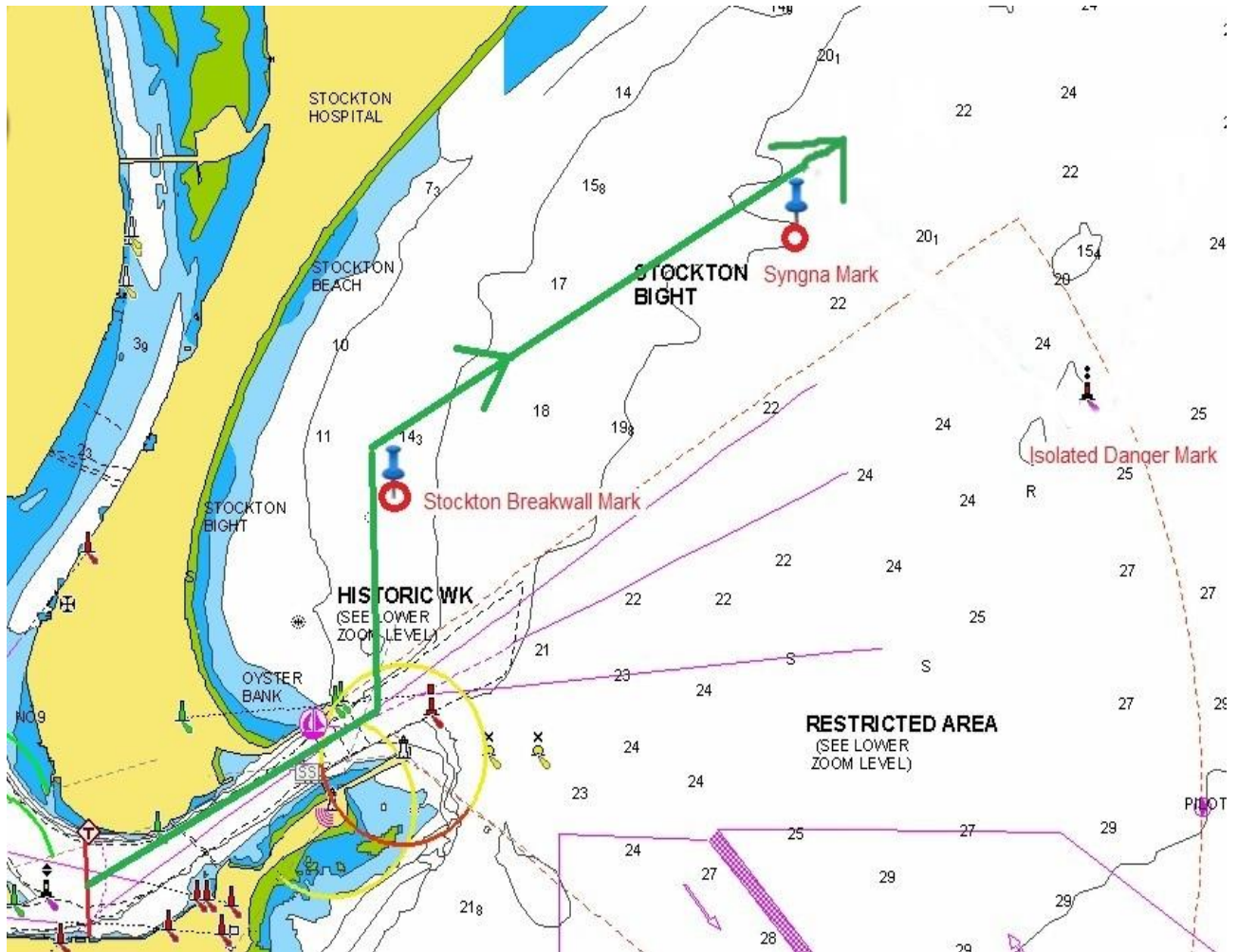
Marina Office

02 4940 8188

0408 299 512

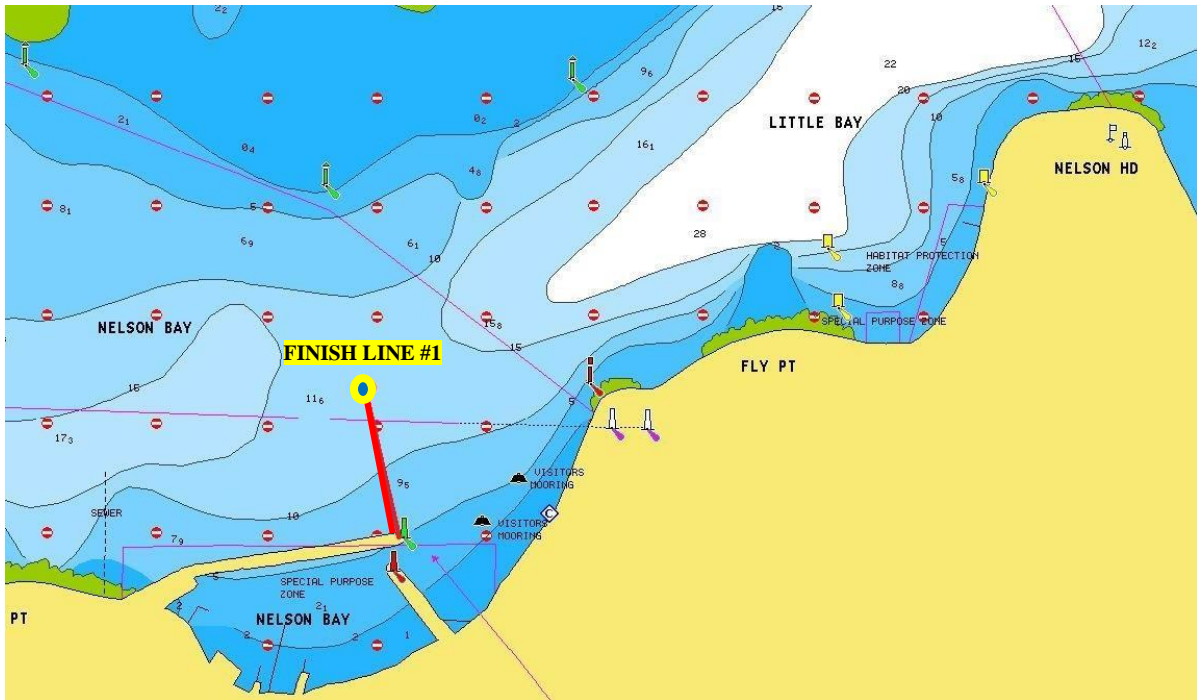
dockmaster@ncyc.net.au

**APPENDIX A – NEWCASTLE DEPARTURE
Stockton Bight Race Area:**



APPENDIX B – FINISHING LINES

Finish Line #1 – D’Albora Marinas



Finish Line #2 – Point Stephens Gate

