

Water Quality Monitoring Report April 2010

Newcastle Cruising Yacht Club

File No 0-950 Water Quality Monitoring

Prepared for Newcastle Cruising Yacht Club Limited
Suite 9
NCYC Commercial Centre
91 Hannel Street
Wickham 2293

By **PPI Services Pty. Limited**
ABN 47 003 693 123



Report Certification:

PPI Services Pty Ltd has prepared the accompanying report as at 15th April 2010 (the Report) for Newcastle Cruising Yacht Club (the Client) at the request of and exclusively for the use and benefit of the Client and/or its Directors.

Under the terms of its engagement, PPI Services Pty Ltd has examined the various environmental practices of project, and has relied on information provided by the Client and the on-site observations of its personnel. The qualifications of personnel involved in the preparation of this Report have previously been supplied to the Client.

This Report has been prepared in accordance with generally accepted practices using standards of care and diligence normally practiced by recognized consulting firms performing services of a similar nature. PPI Services Pty Ltd is not responsible for the accuracy of information provided by other individuals or entities that is used in this Report. This Report presents our professional judgment based upon information provided and findings identified in this Report and interpretation of such data based upon our experience and background, and no warranty, either express or implied, is made. The conclusions presented are based upon the current regulatory climate and may require revision if future regulatory changes occur.

It is a condition of the provision of this Report that any liability of PPI Services Pty Ltd to the Client for anything contained or stated herein shall be limited to the amount of the fee actually paid or payable by the Client to PPI Services Pty Limited for this Report and it is a further condition of the provision of this Report that any liability of PPI Services Pty Ltd to the Client for anything contained or stated in the Report is to the fullest extent permitted by law is hereby excluded unless the claim giving rise to such liability is made in writing to PPI Services Pty Ltd within twelve (12) months of the date of this Report.

This Report is issued with the understanding that it is the responsibility of the client, to ensure that the information contained herein is brought to the attention of the appropriate regulatory agencies, where required by law.

Neither PPI Services Pty Ltd nor any member, associate or employee of PPI Services Pty Ltd undertakes any responsibility for any injury, loss or damage claimed by the client arising out of a claim by any third party against the Client in connection with the Report.

The Assessment has been conducted in accordance with the best practices available at the time and considers the identified hazards determined. Should any further hazards be identified at a later date, it is suggested that the processes be re-examined and this report updated.

I hereby certify that this report includes to findings and recommendations of the assessment process.

Stephen Fell
PPI Services Pty Ltd

Date: 15th April 2010

Contact details:

Stephen Fell
PPI Services Pty Ltd
PO Box 404
WALLSEND NSW 2285
Telephone: 02 4950 2023
Facsimile: 02 4950 2169
Email: mycelx@ppiservices.com.au

Peter Arnott
PPI Services Pty Ltd
PO Box 404
WALLSEND NSW 2285
Telephone: 02 4950 2023
Facsimile: 02 4950 2169
Email: peter@ppiservices.com.au



Introduction

PPI Services were commissioned by Newcastle Cruising Yacht Club Limited to implement a Water Quality Monitoring Programme during construction and operational phases of the Newcastle Cruising Yacht Club Marina - Lot 103, Hannell Street, Wickham. The water quality-monitoring programme was designed to monitor and assess potential impacts of Marina construction and operation activities upon the quality of receiving harbour waters.

The Licence (EPL 11396) was then varied in accordance with the 'Draft Notice of Licence Variation Newcastle Cruising Yacht Club (NCYC) EPL 11396', dated 28th August 2008. The revised conditions involve a visual assessment/interface probe test for the presence of hydrocarbons at two existing groundwater wells (GW1 and GW4) every six months. Should positive results for the presence of hydrocarbons be obtained further laboratory analysis and testing will be required within 30 days of the initial discovery.

Methodology

Groundwater sampling of GW1 and GW4 was carried out with an interface probe test of each well and confirmed with a visual assessment of a water sample drawn from each well by means of a 1 litre disposable bailer.

Sample Date 15th April 2010

Sample Locations as Per **Figure 1**

Results

Results for this sampling event are presented below:

GW1: Water at 2.10 metres and well bottom at 4.20 metres

pH 6.90 and temperature 23.7°C

No hydrocarbons detected by interface probe and no visible hydrocarbons observed

GW4: Water at 2.75 metres and well bottom at 4.80 metres

pH 7.55 and temperature 23.4°C

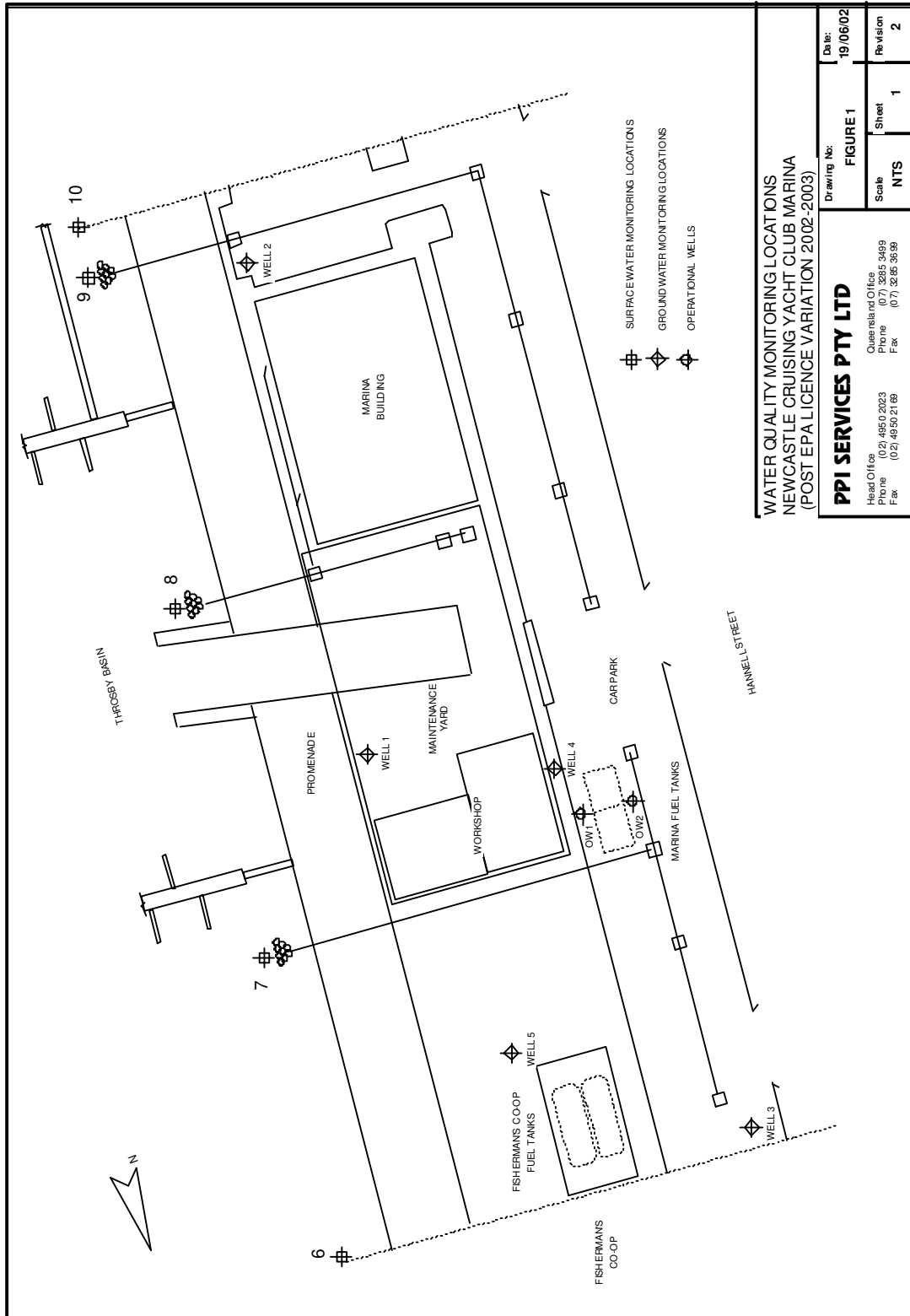
No hydrocarbons detected by interface probe and no visible hydrocarbons observed

Discussion

No hydrocarbons were detected in the wells sampled

All levels were at similar or below levels of previous monitoring events.

The next monitoring event is scheduled for October 2010.



WATER QUALITY MONITORING LOCATIONS
 NEWCASTLE CRUISING YACHT CLUB MARINA
 (POST EPA LICENCE VARIATION 2002-2003)

PPI SERVICES PTY LTD Head Office (02) 4950 2023 Phone (07) 2885 3499 Fax (02) 4950 2188		Drawing No: FIGURE 1 Scale: NTS Sheet: 1 Revision: 2	
Date: 19/06/02 Head Office (02) 4950 2023 Phone (07) 2885 3499 Fax (02) 4950 2188		Date: 19/06/02 Revision: 2	